



BABEȘ-BOLYAI UNIVERSITY CLUJ-NAPOCA

FACULTY OF GEOGRAPHY

DOCTORAL SCHOOL OF GEOGRAPHY



CULTURAL LANDSCAPES FROM THE HÂRTIBACIU RIVER BASIN

– Summary of thesis –

PhD student: Anița Constantin

Scientific coordinator: Prof. Dr. Pompei Cocean

Cluj-Napoca

2020

TABLE OF CONTENTS

INTRODUCTION	4
1. THE CULTURAL LANDSCAPE – BETWEEN CONCEPT AND REALITY	7
1.1. THEORETICAL ASPECTS	7
1.1.1. Cultural landscape– connotations of the concept.....	7
1.1.2. The structure of the cultural landscape	17
1.1.3. The functions of the cultural landscape.....	20
1.2. METHODOLOGY.....	24
1.2.1. Methods and techniques of analysis.....	24
1.2.2. Used data and informations and their sources.....	25
2. CULTURAL LANDSCAPE FROM THE HÂRTIBACIU VALLEY – PRODUCTS OF THE POPULATION OF THE TERRITORY.....	26
2.1. THE FIRST SIGNS OF POULATION AND THE EVOLUTION OF THE SOCIETY IN RELATION TO THE PROPERTY OVER THE LAND.....	26
2.1.1. The Prehistory and the village communities.....	26
2.1.2. The Antiquity and the roman-dacian mélange	27
2.1.3. The Middle Ages and the mulmulticulturalism.....	30
2.1.4. The mutations of the modern and the contemporary periods.....	39
2.2. DENSITY AND CONTINUITY OF POPULATION.....	44
2.3. ETHNICAL AND CULTURAL DIVERSITY MATERIALISED IN CULTURAL LANDSCAPES.....	54
2.3.1. The diversity of architectural elements.....	54
2.3.2. The variety of cult edifices.....	57
2.3.3. The folk costume as an element of multicultural ethnography.....	57
3. THE TYPOLOGY OF THE CULTURAL LANDSCAPES FROM THE HÂRTIBACIULUI VALLEY.....	67
3.1. CULTURAL LANDSCAPES GENERATED BY PRODUCTIVE ACTIVITIES	70
3.1.1. The agricultural cultural landscape.....	70
3.1.2. Cultural landscapes connecetd to forestry.....	92
3.1.2. From crafts to technogenic landscape.....	112
3.1.4. The cultural landscape related to tourism.....	133
3.1.5. The cultural landscape related to the commercial activities and services	151
3.2. THE RESIDENTIAL CULTURAL LANDSCAPE.....	161
3.2.1. Elementary residential cultural landscape.....	163
3.2.2. Rural residential cultural landscape.....	164
3.2.3. Urban residential cultural landscape.....	178
3.3. HISTORICAL CULTURAL LANDSCAPE.....	183
3.3.1. Archeological sites.....	184
3.3.2. The fortifications of the ensembles of the Saxon churches.....	185
3.4. THE SACRAL CULTURAL LANDSCAPE.....	191
3.4.1. The sacral cultural landscape related to rituals.....	194

3.4.2. The sepulchral cultural landscape.....	207
3.4.3. Temporary sacral cultural landscape.....	212
3.5. SYMBOLIC CULTURAL LANDSCAPE.....	213
3.5.1. Land marking elements.....	213
3.5.2. Geographic symbols.....	217
3.5.3. Symbolic elements to underline an achievement.....	217
3.5.4. Elements of ethno-cultural symbolism.....	218
3.6. COMMEMORATIVE AND HONOURING CULTURAL LANDSCAPES.....	219
3.7. DEGRATED CULTURAL LANDSCAPES.....	221
4. EVALUATION OF CULTURAL LANDSCAPES FROM THE HÂRTIBACIU VALLEY	228
4.1. LANDSCAPE ASSESMENT METHODS.....	233
4.1.1. Qualitative methods of landscape assessment.....	237
4.1.2. Quantitative methods of landscape assessment.....	240
4.2. METHODS USED IN THE ASSESSMENT OF CULTURAL LANDSCAPES IN THE HÂRTIBACIU VALLEY.....	265
4.2.1 The CORINE Land Cover method.....	265
4.2.2. The satellite image analysis method.....	272
4.2.3. The historical evolution analysis method.....	276
4.3. THE INVENTORY OF THE CULTURAL LANDSCAPES.....	286
4.3.1. Models of good practice regarding the inventory of cultural landscapes in the form of Atlases of cultural landscapes or databases with and about cultural landscapes	290
4.3.2. Database with elements of cultural landscapes in Romania.....	301
4.3.3. Map of cultural landscapes in the Hârtibaciu Valley.....	302
5. VALORISATION OF THE CULTURAL LANDSCAPES FROM THE HÂRTIBACIU VALLEY.....	304
5.1. THE TYPOLOGY OF VALORISATION BY DOMAIN (ECONOMY, EDUCATION, CULTURE, ENVIRONMENT, TOURISM).....	305
5.1.1. Economic.....	305
5.1.2. Educational.....	305
5.1.3. Cultural.....	306
5.1.4. Environmental.....	306
5.1.5. Tourism.....	306
5.2. FRAMEWORK TO SAFEGUARD CULTURAL LANDSCAPES.....	308
5.2.1. Value analysis – assessment of cultural landscapes.....	308
5.2.2. Protection and preservation of cultural landscapes.....	309
5.2.3. Adequate management for the maintenance of cultural landscapes.....	309
5.2.4. Interventions and responsible measures.....	310
CONCLUSIONS.....	316
REFERENCES.....	318

ANNEXES	338
Annex 1: European Landscape Convention.....	338
Annex 2: Hârtibaciu Valley – Thematic Maps.....	339
Annex 3: Polarisation Scheme of the Hârtibaciu Valley Microregion.....	342
Annex 4: Nomenclature of Localities from the Hârtibaciu Valley.....	343
Annex 5: Population Dynamics and Demographic Data.....	344
Annex 6: Road Transport Infrastructure and Road Conditions (2019) from the Hârtibaciu Valley	348
Annex 7: Accommodation Units from the Hârtibaciu Valley.....	350
Annex 8: Calendar of Organisation of Fairs and Markets.....	351
Annex 9 : Natura2000 - Podișul Hârtibaciului (Rospa0099) – Protected Species.....	352
Annex 10: The Fortified Saxon Churches.....	353
Annex 11: The Organs in the Evangelical Churches and their Builders.....	360
Annex 12: Evangelical Confessional Schools.....	361
Annex 13: First Map Of Transylvania Made By Johannes Honterus.....	363
Annex 14: General Map of the First Hapsburg Military Mapping.....	364
Annex 15: Orthodox Churches from The Hârtibaciu Valley.....	365
Annex 16 : Great Cultural Personalities.....	377
Annex 17: Corine Land Cover Classes (Clc).....	378
Annex 18: Indexes Which Can Be Calculated Using Gis and Remote Sensing Software.....	380
Annex 19: Landscape Metrics (by Mcgarigal).....	381
Annex 20 : Evaluation Form by I. Pătru–Stupariu.....	383
Annex 21: Survey Of The Landscape Evaluation And Perception – I. Pătru-Stupariu.....	390
Annex 22: Record Sheet Of Cultural Landscape Elements For The Kleks Database Germany	392
Annex 23: Examples Of Inventories Of Cultural Landscapes In Germany.....	393
Annex 24: Belgium –Inventory Of Landscapes / Description Sheet For Each Landscape Element	398
Annex 25: Archaeological Sites From The Hârtibaciu Valley.....	399
Annex 26: Historical Monument List For The Hârtibaciu Valley.....	400
Abbreviations.....	406

Key words: Cultural landscapes, identity, multiculturalism, cultural heritage, protection, conservation, proper management, landscape inventory, landscape valorisation, Hârtibaciu Valley.

Theme and objectives of the study

This paper is an analysis of the cultural landscapes of the Hârtibaciu Valley and its main objectives are:

- to explain terminology related to cultural landscapes;
- to present the genesis of cultural landscape;
- to expose in detail, the typology of cultural landscapes;
- to illustrate models for assessing cultural landscapes;
- to analyze changes in cultural landscapes using different methods (CLC, satellite image processing and historical analysis);
- to expose possibilities for valorisation.

The study is structured into five major chapters that follow the objectives described above.

CHAPTER 1. THE CULTURAL LANDSCAPE – BETWEEN CONCEPT AND REALITY

Cultural landscapes are the result of the interaction and the anthropic modeling of the natural environment, which results in the reflection of identity, customs, traditions, values, in other words, the culture of the group that created the cultural landscapes. They are unique to every society, and it is precisely the uniqueness that makes cultural landscapes attractive.

UNESCO describes cultural landscapes as “cultural properties, resulting from the combination of human actions and nature, which illustrate the evolution of human society and of the settlements over time, influenced by physical conditions and/or opportunities offered by their natural environment and forces, could they be social, economic, cultural, internal or external”¹.

¹ <https://whc.unesco.org/document/163852>: “Cultural landscapes are cultural properties and represent the ‘combined works of nature and of man’ designated in Article 1 of the *Convention*. They are illustrative of the evolution of human

The study of cultural landscapes has concerned a lot of authors from different domains such as architecture, botanical, literature, forestry, painting, etc., and especially many authors from the geography field. The most representative of them are Friedrich Ratzel, Otto Schlüter, H. H. Wöbse, Denis Cosgrove, Michael Jones, Almo Farina, Mariusz Czepczynski from the international academic environment, or Pompei Cocean, David Nicoleta, Wilfried E. Schreiber, Flavia Stoica, Alexandru Calcatinge, Iulian Dincă, Nicolae Baci, etc. from the Romanian academic world, to name only some of the most famous.

The structure of the cultural landscape has a vertical as well as horizontal layout. Taxons provide the overview of the hierarchy.

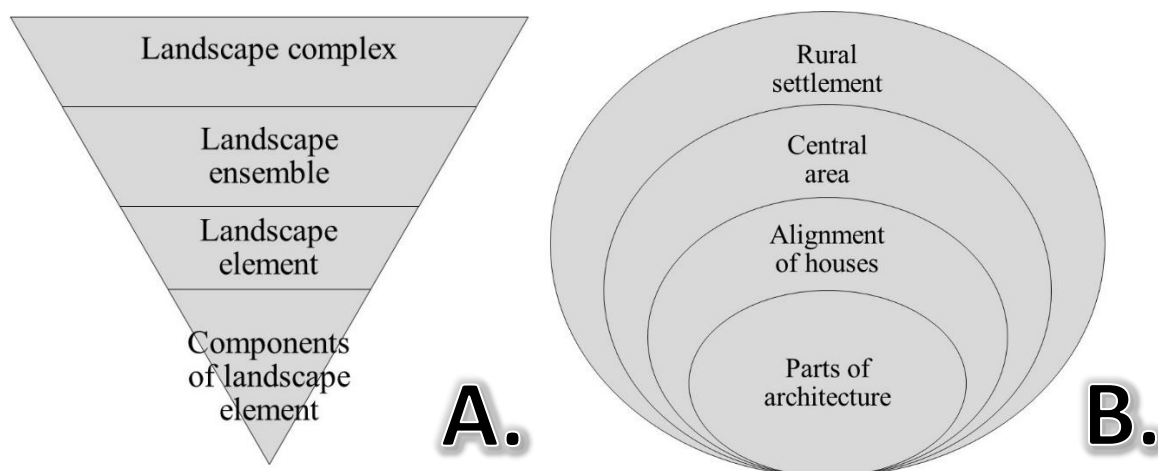


Fig. 1. A. – *Hierarchy of the cultural landscape* (by Glink C., Meyer H.-H., Schottke Maya)² / B. – *Hierarchy of the cultural landscape for the Hârtibaciu Valley*

The functions of the cultural landscape have developed as the human species evolved. If the landscapes initially performed the environmental function, mistaking themselves in this form and stage with the natural landscape, they then performed increasingly complex functions such as aesthetic, economic, social, environmental, symbolic functions, etc. (after Cocean P., David Nicoleta - 2014³). Following the primary function, the purpose of creation, the typology of the cultural landscape (from the genetical point of view) will be detailed in Chapter III.

society and settlement over time, under the influence of the physical constraints and/or opportunities presented by their natural environment and of successive social, economic and cultural forces, both external and internal. “

² Glink, C., Meyer, H.-H., Schottke, Maya, (2007), *Mapping and registration of endangered traditional cultural landscape elements in Transylvania – first methodical approach in the sample region of Bistrita*, în Romanian Review of Regional Studies, Vol. III, Nr. 2., P. 12

³Cocean, P., David, Nicoleta (2014), *Peisaje culturale*, Editura Risoprint, Cluj-Napoca, P. 172-181

CAPITOLUL 2. CULTURAL LANDSCAPES FROM THE HÂRTIBACIU VALLEY – PRODUCTS OF THE POPULATION OF THE TERRITORY

This chapter attaches particular importance to the historical factor that has influenced the anthropogenic component in the process of cultural landscape genesis. The first subchapters describe the great periods of housing in the Hârtibaciu Valley and the evolution of the society in relation to the ownership of the land, a factor that allowed the freedom of shaping the cultural landscapes. The analysis goes through the prehistoric time and the era of village communities, continues with the Antiquity and Daco-Roman period, insists on the Middle Ages and the great colonisations in the intra-Carpathian area and ends with the specificities of modern and contemporary times.

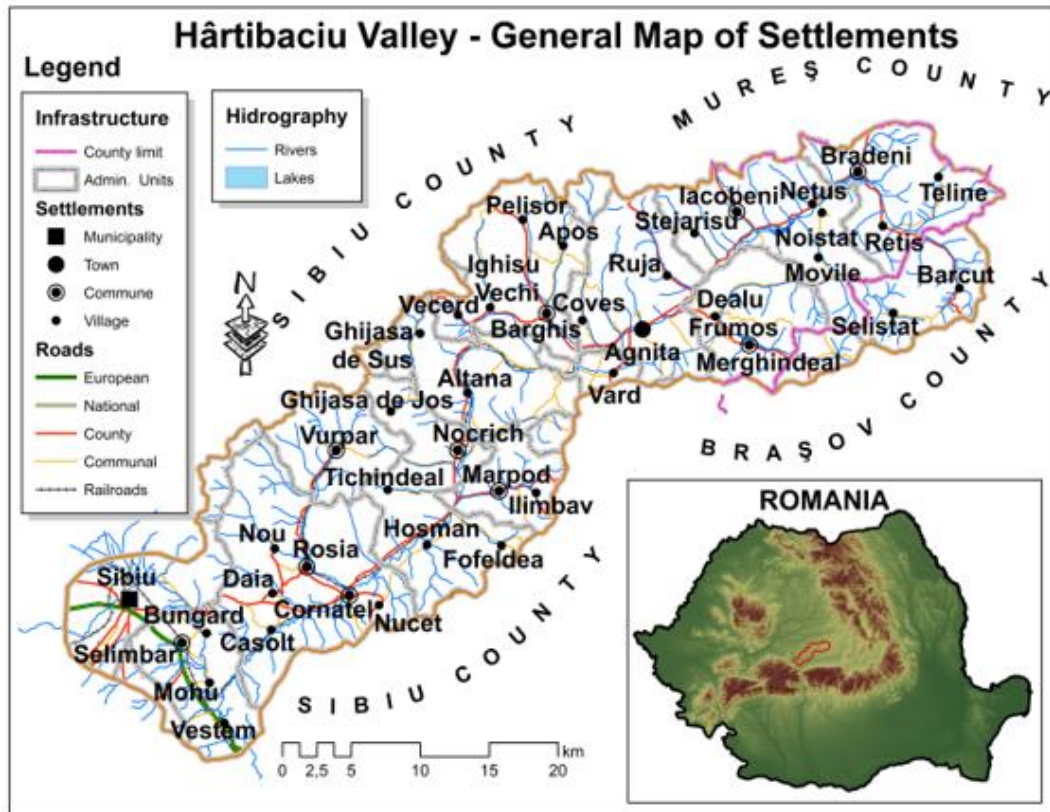


Fig. 2. – Study area

Demographic data from ethnographic surveys, censuses and other demographic records reflect population trends (density, ethnic groups, migration, confessional situations, etc.) in the area under study.

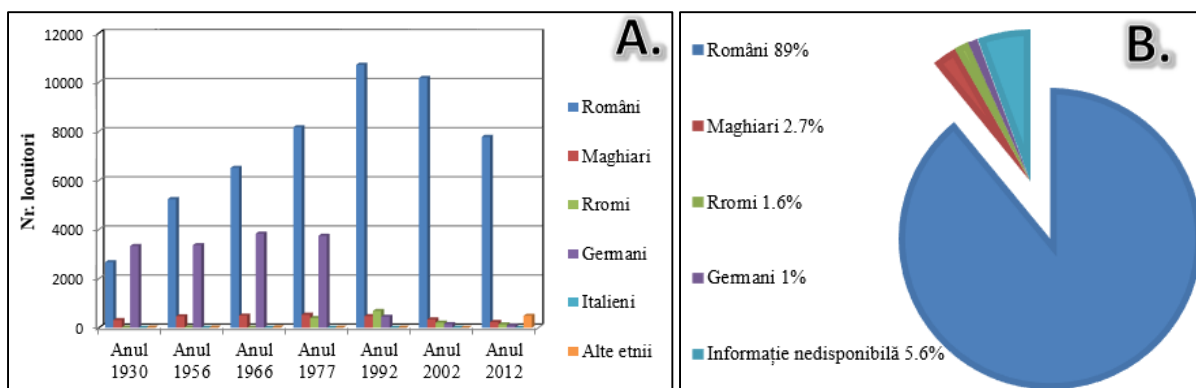


Fig.3. A. – Evolution of the number of inhabitants in the city of Agnita⁴/ B. – Proportions of ethnic groups in Agnita in 2011 (Data: RPL INS 2011)

The cultural landscapes from the Hârtibaciu Valley show a rich ethnic and cultural diversity, materialized in distinct architectural elements, in a variety of religious edifices, emblematic for each religious cult, and in the folk costumes as elements of multicultural ethnography. The architectural types, types of cult building, and the elements of the female and male folk costumes for each ethnic group are detailed. Also, the traditional celebration of the “Running of the lole” and the typical costume are presented.

CHAPTER 3. TYPOLOGY OF CULTURAL LANDSCAPES FROM THE HÂRTIBACIU VALLEY

The typology reflects the categories of the cultural landscape from the genetic point of view, or in other words, classified in terms of the primary purpose of creation (Coccean, David, 2014).

3.1. Cultural landscapes generated by productive activities

They cover the cultural landscapes from the domains of agriculture, forestry, industry, tourism, commerce and services.

The agricultural cultural landscapes detail aspects and characteristics of agricultural landscapes linked to crop cultivation (related to vegetable cultivation, fruit tree cultivation, vine cultivation, landscapes with agricultural terraces, mixed agricultural cultural landscapes).

⁴ <http://www.primaria-agnita.ro/agnita/populu.html>

Agricultural landscapes linked to livestock farming refer to the pastoral landscape, the fanning landscape, the farm landscape, the aquaculture landscape, the hives landscape. Particular attention is paid to the former fish farm in Brădeni, which is an important location in the Natura 2000 site – Podișul Hârtibaciului, for many protected species.

Forest cultural landscapes are divided into several subtypes. The classical forest landscape occupies the largest surface area and in its presentation a brief history of the forests and their administration was provided.

The forest landscapes are also divided into subtypes: artificial parc and wood-pasture cultural landscapes. The latter is typical of the areas of Transylvania inhabited by the Saxon population which added the functionality of these perimeters: a grazing place, with shading benefit for animals in hot summer days, the possibility of harvesting fruits (acorns or fruits), or they could valorise the wood.

Among the most famous wood-pastures in Transylvania is the Breite Reservation near Sighișoara and from foreign countries *Reinhardswald* in the land of Hessen, Germany, *Hutewald "Hallowh"* in the *Kellerwald-Edersee Natural Park*, Germany, *Deheesa* in Spain, *Græsningsegeskov* in Denmark, *Rassal Ashwood National Nature Reserve* in Scotland, etc.

Examples were also devoted to the following categories of forest landscapes: singular trees, trees alignments, alignments along river courses, degraded forest landscapes.

The *technogenic cultural landscapes* describe landscapes related to craftsmen and workshops, mechanized production facilities, and the infrastructure of the roads and means of transportation.

The technogenic landscape of craftsmen and workshops include the popular craftsmen, quite small in number, who still produce braided baskets, brooms, forged iron objects, tiles, webs, or folk costumes.

The mechanized production units include from the most rudimentary facilities (mills, milling facilities) in the rural area to modern industrial facilities in the urban area. This sub-chapter details the history of the factories in the town of Agnita developed from the former guilds. The current situation of the production units is also listed.

The technogenic landscapes related to the infrastructure of the roads and means of transport show the types of access in the Hârtibaciu Valley. The analysis introduces types of path and road marking on map materials. From the territory, the access routes per pedes, the road access routes, the quality of the roads, the railways, are analyzed. The history of “Mocănița”, the narrow-gauge railway present in the Hârtibaciu Valley for nine decades, is presented in this subchapter. Air access routes start mainly from the airports in close proximity to the region, and they are in Sibiu, Tg. Mureș or Cluj-Napoca.

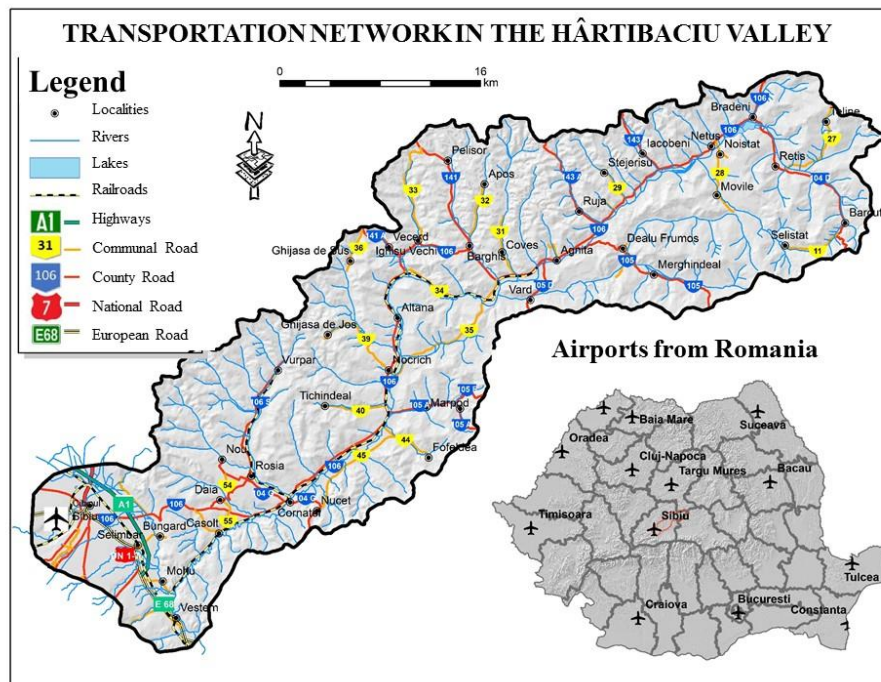


Fig. 4. Means of transportation – roads, railways from the Hârtibaciu Valley and the closest airports

The technogenic cultural landscapes related to special methods of transportation describe the ways and examples of transmission of energy (electricity or gas) or information, via cable, pipelines, and radio waves.

Cultural landscapes related to the tourism sector describe elements that belong to both the natural and the anthropogenic fund. Of each category, the most representative ones are described and illustrated. Natural attractions are cone-type hills named glimee, cemented sandstones and marls named *trovant* with different shapes, many ball-like, floristic associations. Anthropogenic

attractions are the Saxon fortified churches, the Orthodox churches painted by the Grecu brothers, exhibitions, and museums.

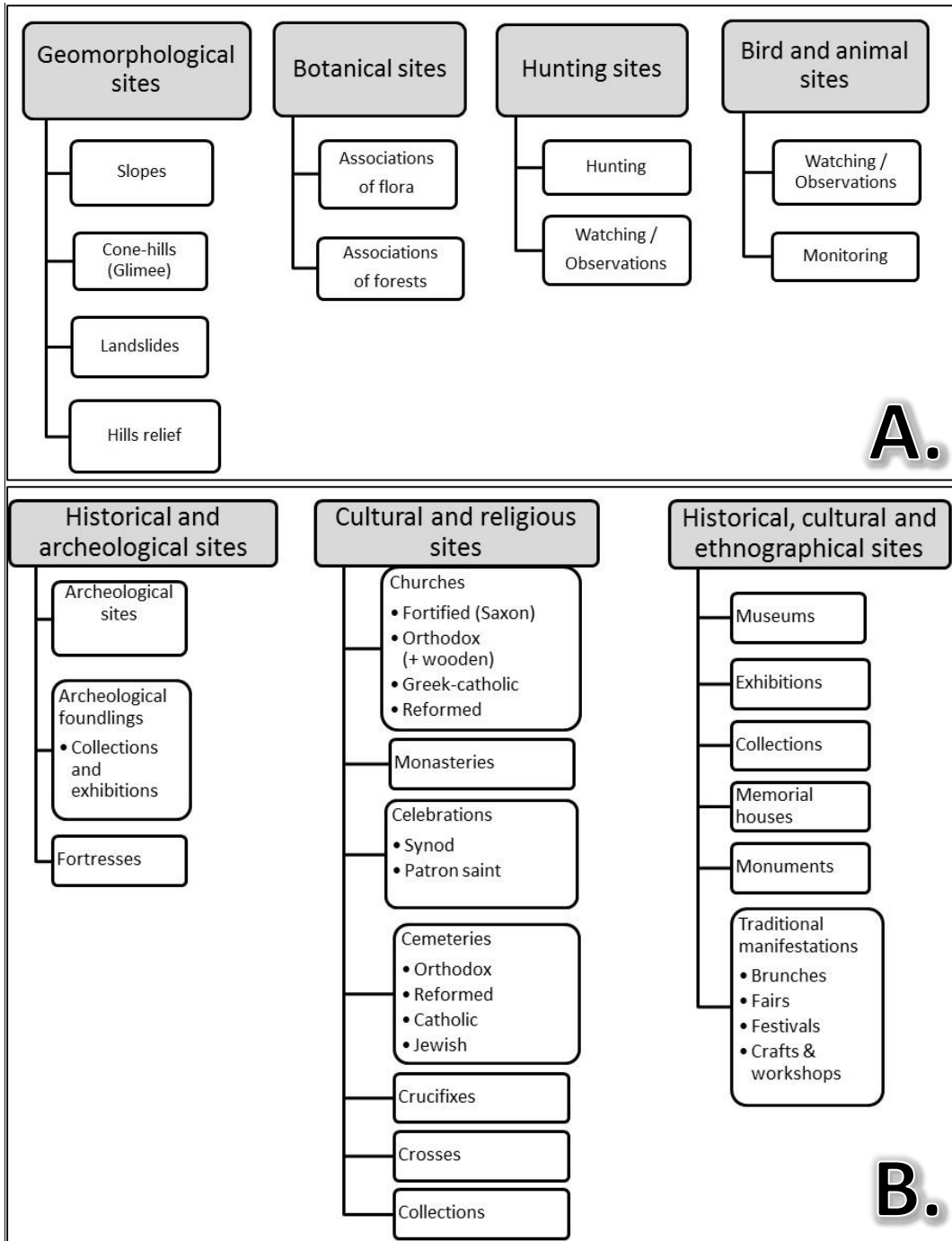


Fig. 5. A –Natural cultural landscapes/ Anthropogenic cultural landscapes⁵

⁵ Constantin, Anița, (2016), *Tourism Potential of Cultural Landscapes in Hârtibaciu Valley*, Geographia Napocensis Anul X, nr. 1, P. 53

Cultural landscapes belonging to the tourist infrastructure present the situation with accommodation units in the Hârtibaciu Valley.

The subchapter presenting the cultural landscapes related to commercial and service activities shows the ways of merchandising products from the Middle Ages when in 1376 Ludovic de Anjou gave Agnita, *villam nostram Zenthagata*⁶, the right to hold markets. The markets and fairs, shops and commercial complexes or banks and other economic institutions are described. The catering, educational, cultural, and medical facilities are also exemplified.

3.2. Residential cultural landscapes

This sub-chapter covers the types of elements of the cultural landscape created and used for residential purposes. Depending on their temporal nature, they reflect durability and persistence over time. Elementary habitat elements, made in the field or in the countryside, are presented. Also, those made from durable materials such as stone, brick, or concrete from rural or urban areas are enumerated. The typology of compact and elongated settlements is briefly explained. Types of households, typical of the ethnic groups of Romanians, Saxons, Gypsies, and Hungarians, are also differentiated.

3.3. Historical cultural landscapes

This sub-chapter presents the archaeological sites mentioned in the National Archaeological Repository for Sibiu County⁷ and the fortification systems of the assemblies of the Saxon churches. The military-defense function that the latter acquired made these assemblies unconquerable fortresses in the enemy's way. The history of the colonization of the Saxons and the types of fortifications and their annexes are mentioned.

⁶ Rus, D.-I., (2004), *Însemne meșteșugărești din Agnita (I)*, în *Sargetia*, vol. XXXII, Deva, P. 21; Fabritius-Dancu, Iuliana, (1980), *Cetăți țărănești săsești din Transilvania*, Revista Transilvania, Sibiu, Planșa 14

⁷<http://ran.cimec.ro/sel.asp?lpag=100&Lang=RO&layers=&crsl=2&csl=2&clst=1&jud=35&campsel=jud&nr=1>

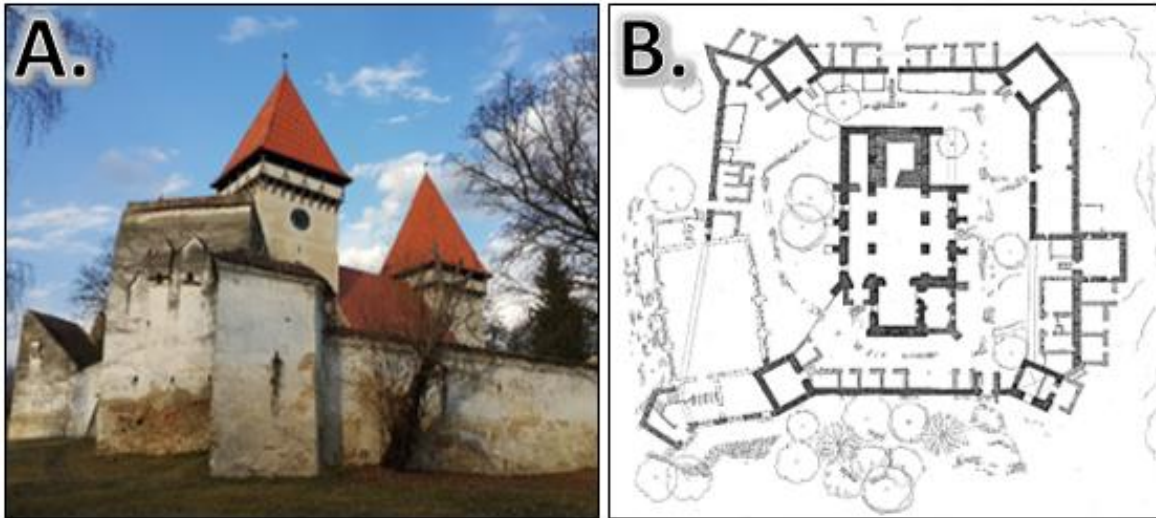


Fig. 6. A. – *Fortified church in Dealu Frumos* / B. – *Scheme of the fortified church in Dealu Frumos* (Source: Revista Uniunii Arhitecților din România⁸)

3.4. Sacral cultural landscapes

These types of landscapes refer to sacral ritual or sepulchral cultural landscapes materialized in the form of monasteries, churches, crosses, and crucifixes. The analysis begins with the first spiritual affirmation in the Hârtibaciu Valley and continues with the history of confessions and the presentation of their representative monuments. The architectural types and elements of worship or decor required by religion dogma or architectural current are detailed. Types of places of burial and crosses, whether a tomb or a symbol of faith, are also illustrated.

3.5. Symbolic cultural landscapes

These types of landscapes are intended to preserve the collective memory of achievements, places, events or they are meant to show borders and mark the territory.

⁸<http://arhitectura-1906.ro/2019/02/centrul-de-studii-de-arhitectura-vernaculara-dealu-frumos-o-lectie-vie-de-patrimoniul/>



Fig. 7. A. - *Type of braided fence în Țeline / B. – Type of Saxon entrance gate in Cașolț / C. - Information panel on the location of the country's geographical center at Dealu Frumos*

3.6. Commemorative and honouring cultural landscapes

Like the previous, symbolic ones, these types of cultural landscapes are meant to preserve the living memory of outstanding cultural personalities or fallen heroes. To them, statues or commemorative plaques are dedicated.

3.7. Degradated cultural landscapes

Degradated or precarious examples have been identified in the territory from each category of cultural landscapes. Causes of degradation have been listed, such as negligence, economic interests, poor management, etc., and solutions to improve their status have been proposed.

CHAPTER 4. EVALUATION OF CULTURAL LANDSCAPES FROM THE HÂRTIBACIU VALLEY

Cultural landscapes must be recognized as resources, and therefore they have to be taken into account by decision-makers. For this purpose, they should be assessed in order to determine their value.

The methods of landscape assessment are multidisciplinary and can be qualitative (esthetic quality, diversity, uniqueness, nature, which are expressed by qualifiers) or quantitative methods of landscape assessment, which use mathematical methods and formulas for calculating some variables.

The methods of landscape assessment proposed by international researchers (Kiemstedt, Linton, Vlami) and a local researcher, Ileana Pătru-Stupariu (quantitative indicator methods,

calculating the naturalness, the human pressure, the environmental transformation and the evaluation of landscape following the visual perception in situ) are presented.

Another mathematical method is also that of using landscape metrics developed by McGarigal and Marks.

Widely used is the CORINE Landcover method, which analyzes the type of land use/cover. The data is provided by the EEA (European Environment Agency) and the database is made by European countries and available free of charge on the institution's website.

4.2. Methods used in the assessment of cultural landscapes in the Hârtibaciu Valley

The CORINE Land cover method was used to highlight changes in the landscape in the samples of years, which showed fluctuations and changes in land use.

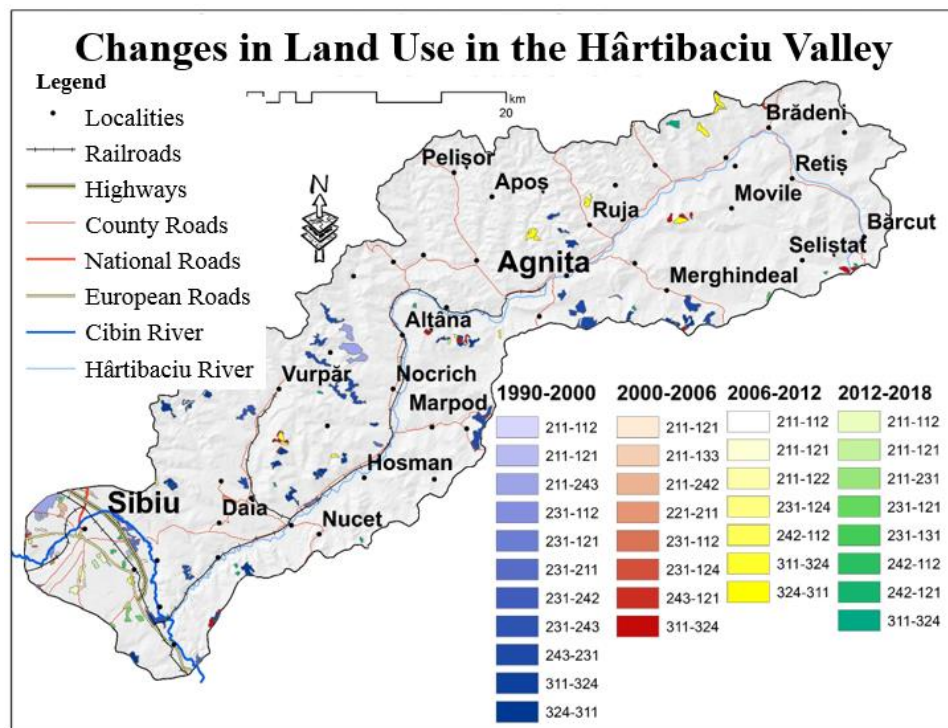


Fig. 8. Comparative data according to land use changes for specific years (Source of data: EEA)

Changes in the landscape were also detected using the satellite image analysis method. The extension of the hydrophilic vegetation on the ponds in Brădeni was analyzed on satellite images from different years. Several combinations of multispectral bands were used to show the increase of the surface with invasive hydrophilic vegetation.

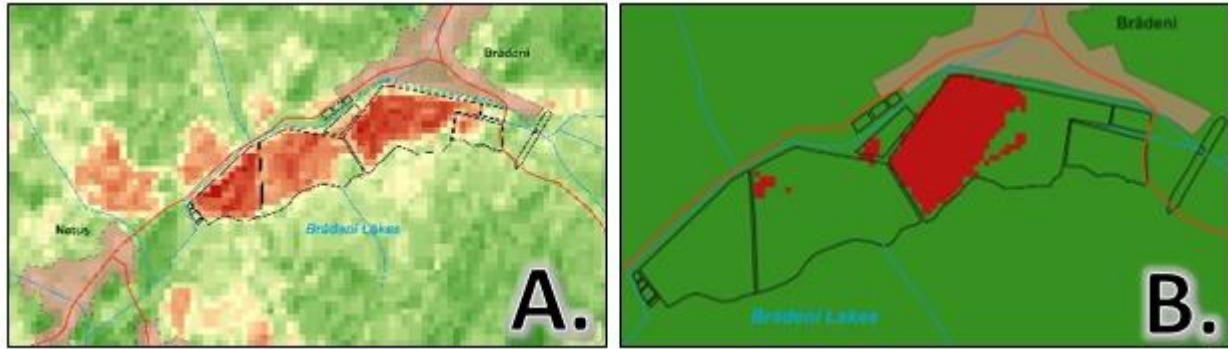


Fig. 9. The red color shows the clear water surface for the year A. – 1982 și B. – 2016⁹

The method of analyzing the historical evolution of the cultural landscape has revealed major changes in the landscape. Historical and recent maps have been analyzed to highlight changes in history.

The analysis started with the description of the first map of the intra-Carpathian space, made by the humanist Johannes Honterus from Brasov, *Chorographiae Transylvaniae*, printed in 1532 in Basel. The maps from the three military Habsburg topographic mappings were then analyzed. The study continued with the identification of new elements on the DTM maps and the most current satellite image (31.03.2019).



Fig. 10. Changes produced on the analyzed maps¹⁰

⁹ Constantin, Anița, (2017), *Landsat Images Analysis of the Extension of Water Vegetation in the Brădeni Lakes in the Hârtibaciu River Basin*, at Air and Water – Components of the Environment International Conference, Cluj-Napoca

¹⁰ Constantin, Anița, Constantin, Marioara-Palagica, (2020), *Comparative Analysis of Territorial Extension of Settlements on Historical Maps and Recent Satellite Imagery. Case Study: The Settlement of Agnita in Transylvania, Romania.*, article sent to *GeoCarto International*

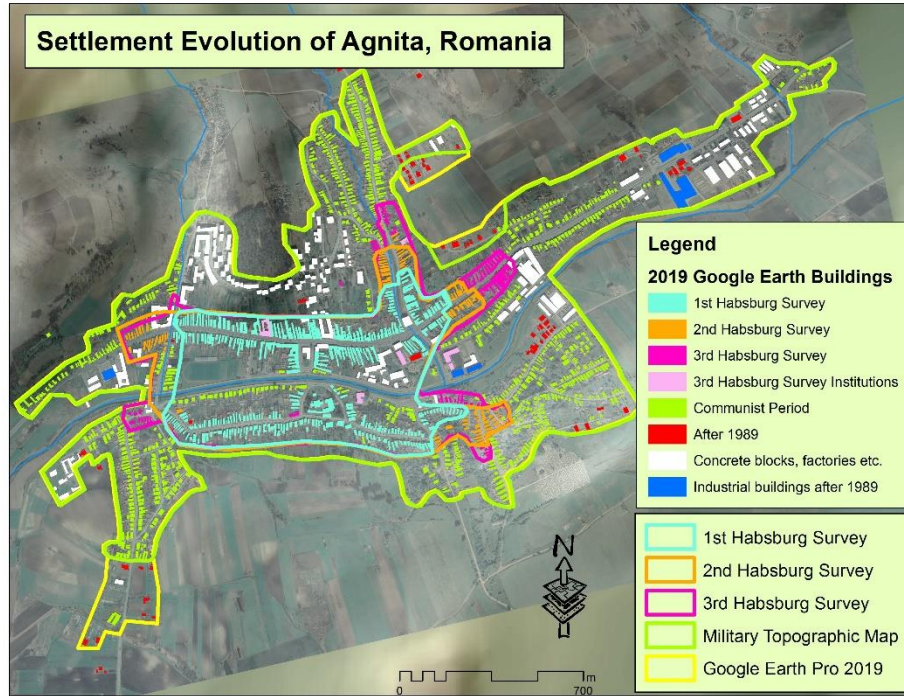


Fig. 11. *The extension of the urban landscape in different historical periods¹¹*

4.3. The inventory of cultural landscapes

This sub-chapter is intended to provide a starting point for the inventory of cultural landscapes. Best practice models of inventories of cultural landscapes in the form of atlases or databases with and about cultural landscapes are exemplified: Landscape Atlas of the Czech Republic, the cadastre of cultural landscapes in Germany: KLEKs – KulturLandschaftsElementeKataster, the Atlas of cultural landscapes from Italy “Atlante del Patrimonio e del Paesaggio attivo”-“LandscapeFOR”, Spain’s cultural landscape database, Belgium’s cultural landscapes database, the Netherlands cultural landscapes database, the Swiss cultural landscape inventory, the Romanian cultural landscape elements database managed by the Ministry of Culture. For the Hârțibaciului Valley, the map of cultural landscapes was made as a starting point for the inventory of cultural landscapes at the mesoscale.

¹¹ Constantin, Anița, Constantin, Marioara-Palagica, (2020), *Comparative Analysis of Territorial Extension of Settlements on Historical Maps and Recent Satellite Imagery. Case Study: The Settlement of Agnita in Transylvania, Romania.*, article sent to *GeoCarto International*

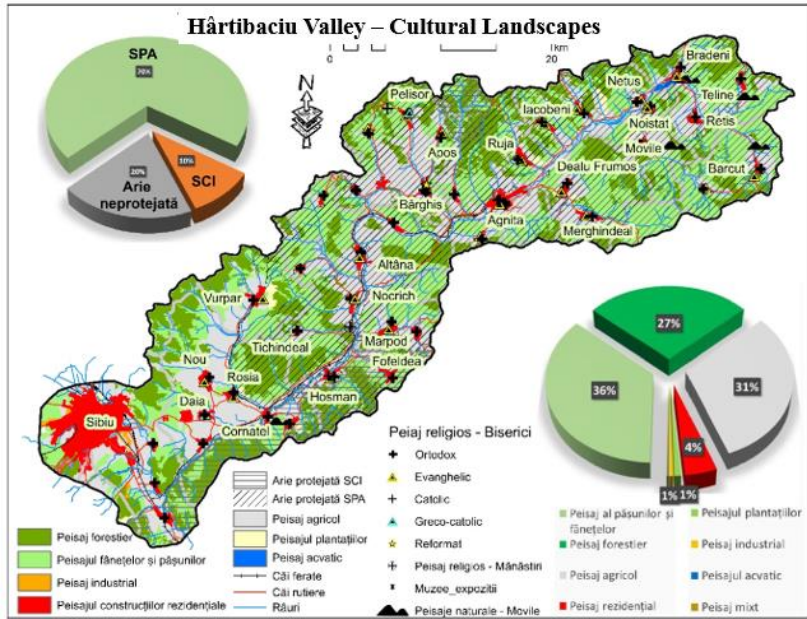


Fig. 12. Map of the main elements of the cultural landscapes

CHAPTER 5. VALORISATION OF THE CULTURAL LANDSCAPES FROM THE HÂRTIBACIU VALLEY

Valorising cultural landscapes can be economic (it means obtaining the financial benefits from their exploitation and being used as a resource), educational (it brings benefits of knowledge), cultural (it strengthens identity and sense of belonging to a culture), environmental (suitable environment for a wide variety of flora and fauna), tourism (increase in attractiveness and tourist numbers through diversification of tourism products).

Enhancing cultural landscapes is possible through:

- assessment of cultural landscapes and their inventory;
- a legislative framework designed to help and guide the protection-conservation and the preservation of cultural landscapes;
- elaboration of an adequate management plan for the maintenance of cultural landscapes.

A number of interventions and responsible measures for domains requiring intervention have been proposed for the sustainable development of cultural landscapes.

Conclusions

They summarize the objectives of the study and its potential for recovery.

References

1. Andréé, E., (1969), *Din istoricul olăritului în Valea Hârtibaciului*, în *Cumidava-Muzeul Județean Brașov, Intreprinderea poligrafică Sibiu*, Nr. III
2. Apostol., L., Chelaru, D.-A., (2011), *The Landscape Dynamics in Piatra Neamț Area*, Present Environment and Sustainable Development, vol. 5, no.2.
3. Arnberger, E., Kretschmer, Ingrid, (1975), *Wesen und Aufgaben der Kartographie. Topographische Karten*, Ed. Franz Deuticke, Vol. I
4. Arriaza, M., Cañas, J., F., Cañas, J., A., Ruiz, P., González, J., Barea, F., (2005), *Landscape assessment via regression analysis*, XIth Congress of the EAAE (European Association of Agricultural Economists), Copenhagen, Denmark, August 24-27
5. Azcárate Luxán, Blanca, Fernández Fernández, A., (2017), *Geografía De Los Paisajes Culturales*, Ed. UNED, Madrid
6. Baciú, N., (2014), *Dinamica și tipologia peisajului*, Ed. Bioflux, Cluj-Napoca
7. Baciú, N., Muntean, O., Creța, Simona, Schreiber, W., Schuster, E., (2007), *Cultural Landscape and Tourism Potential in the Transylvanian Plain*, Romanian Review of Regional Studies, Volume III, Number 2
8. Bădescu, I., Cucu-Oancea, Ozana, Șișeștean, Ghe., (2011), *Tratat de sociologie rurală*, Ed. Mica Valahie, București
9. Baier, Hannelore, Bottesch, M., Nowak, D., Wiecken, A., Ziegler, W., (2011), *Geschichte und Traditionen der deutschen Minderheit in Rumänien*, Ed. Central, Mediaș
10. Bărbulescu, M., Deletant, D., Hitchins, K., Papacostea, Ș., Teodor, P., (1998), *Istoria României*, Ed. Enciclopedică, București
11. Barițiu, G., (1889), *Părți alese din istoria Transilvaniei*, Vol. I, Ed. W. Krafft, Sibiu
12. Bastian, O., (1996), *Biotope mapping and evaluation as a base of nature conservation and landscape planning*, în *Ekológia*, Bratislava, Vol. 15, Nr. 1,5-17
13. Bastian, O., Schreiber K.-Fr., (1999), *Analyse und ökologische Bewertung der Landschaft*, Spektrum Akademischer Verlag Heidelberg-Berlin, Berlin
14. Bastian, O., Schreiber, K.-F., (1999), *Analyse und ökologische Bewertung der Landschaft*, Ed. Spektrum, Heidelberg-Berlin
15. Bastian, O., (2001), *Landscape Ecology – towards a unified discipline?*, în *Landscape Ecology*, Kluwer Academic Publishers, Netherlands
16. Bastian, O., Steinhardt, Uta, (2002), *Development and Perspectives of Landscape Ecology*, Kluwer Academic Publishers, Netherlands
17. Behlen, S., (1839), *Allgemeine Forst- und Jagd-Zeitung*, An VIII, Nr. 44, Ed. J. D. Sauerlander, Frankfurt am Main
18. Benedek, J., (2004), *Amenajarea teritoriului și dezvoltarea regională*, Ed. Presa Universitară Clujeană, Cluj-Napoca
19. Bergstrom, J., C., (2002), *Postproductivism and Rural Land Value*, Conference on Land Use Conflicts and Problems, Orlando, Florida
20. Bethlen (Grafen von), A., (1831), *Geschichtliche Darstellung des deutschen Ordens in Siebenbürgen*, Ed. Mart. Chr. Adolph, Viena
21. Bičík, I., Kupková, L., Jeleček, L., Kabrda, J., Štych, P., Janoušek, Z., Winklerová, J., (2015), *Land Use Changes in the Czech Republic 1845-2010: Socio-Economic Driving Forces*, Springer Geography, Springer, Cham
22. Bielz, E., A. (1856), *Fauna der Wirbelthiere Siebenbürgens - eine systematische Aufzählung und Beschreibung der in Siebenbürgen vorkommenden Säugethiere, Vögel, Amphibien und Fische*, Ed. Filtsch, Hermannstadt
23. Bielz, E., A., (1857), *Handbuch der Landeskunde Siebenbürgens: eine physikalisch-statistisch-topographische Beschreibung dieses Landes*, Ed. S. Filtsch, Hermannstadt
24. Binder, J., (1911), *Aus der Geschichte des Waldwesens der Stadt Hermannstadt*, în *Verein für siebenbürgische Landeskunde*, Sibiu
25. Boicu, D., (2016), *The Ethnic Pluralism of the Nineteen Century in Transylvania according to the Ecclesiastical Painting of the Grecu Brothers*, în *Review of Ecumenical Studies*, Sibiu, 8, 1/2016
26. Boicu, D., (2017), *Pictura bisericească a fraților Grecu – reflecție a pluralismului etnic și confesional din Transilvania secolului al XIX-lea*, în *Îndrumător bisericesc pe anul de la Hristos 2017*, Ed. Andreiana – Arhiepiscopia Sibiului, Sibiu
27. Bolovan, I., (2005), *Evreii din Transilvania între 1870-1930. Contribuții demografice*, în *Anuarul Institutului de Istorie “G. Bariț” din Cluj-Napoca*, tom. XLIV, P. 539-550

28. Bonham, Ch., D., Mergen, D., E., Montoya, S, (2004), *Plant Cover Estimation: A Contiguous Daubenmire Frame*, Rangelands, pag. 17-22
29. Bonnemaïson, J., Cambrézy, L., Quinty-Bourgeois, L., (1999), *Les territoires de l'identité. Le territoire, lien ou frontière ?*, Tomes I et II. Paris- Montréal, L'Harmattan
30. Borsa, G., (2005), *Die Konfessionalisierung im Spiegel der siebenbürgischen Druckorte und Buchdrucker*, în Leppin, V., Wien, U., A., (Ed.), *Konfessionsbildung und Konfessionskultur in Siebenbürgen in der frühen Neuzeit*, Ed. Franz Steiner, Stuttgart
31. Borsdorf, A., Bender, O., (2010), *Allgemeine Siedlungsgeographie*, Ed. Böhlau, Viena-Köln-Weimar
32. Botequilha Leitão, A., Miller, J., Ahern, J., McGarigal, K., (2006), *Measuring landscapes: A planner's Handbook*, Ed Island Press, Washington-Covelo-London
33. Botez, C., (1979), *Din istoricul pădurii românești (I) în Cercetări istorice*, Nr. XI, Iași
34. Bräm, R., (2013), *Methode einer flächendeckenden Landschaftsbildbewertung der Schweiz basierend auf Sichtbarkeits- und Vektoranalysen im GIS*. Lucrare de diplomă, Zürich
35. Braun-Blanquet, J., (1928/1964), *Pflanzensoziologie. Grundzüge der Vegetationskunde*, Biologische Studienbücher Vol. 7, Ed. Springer Berlin Heidelberg GmbH
36. Broermann, J.,M.,B., (2003), *Kulturlandschaftskataster für urbane Räume: Freiflächen: dargestellt an Beispielen aus Hamburg*, Kulturlandschaftsforschung und Industriearchäologie, Hamburg, BOD, Norderstedt
37. Bruns, D., Münderlein, D., (2018), „*Paysage à votre santé*“. *Gesundheitsfördernde Landschaften –Eine Betrachtung von Naturparks*, în Weber, F., Weber, Friedericke, Jenal, Corinna, (Ed.), *Wohin des Weges? Regionalentwicklung in Großschutzgebieten*, Akademie für Raumforschung und Landesplanung, Arbeitsberichte, Nr. 21, Hannover
38. Bucur, C., Deleanu, V., Gangolea, Cornelia, (1995), *Tausendjährige rumänische Zivilisation im "Astra" Museum-Sibiu*, Ed. Astra Museum, Sibiu
39. Burel, F., Baudry, J., (2004), *Landscape Ecology. Concepts, Methods and Applications*, Ed. Science Publishers, Plymouth
40. Burkhard B., Maes, J., (Eds.) (2017), *Mapping Ecosystem Services*, Pensoft Publishers, Sofia
41. Burtea, V., (2002), *Rromii în sincronia și diacronia populațiilor de contact*, Ed. Lumina-Lex
42. Calcatinge, Al., (2013), *Conceptul de peisaj cultural*, Editura Universitară "Ion Mincu", București
43. Cardille, A.,J., Turner, Monica, G., (2017), *Understanding Landscape Metrics*, în Gergel, Sarah, E., Turner, Monica, G., *Learning Landscape Ecology: A Practical Guide to Concepts and Techniques*, Ed. Springer, New York, Ed. a 2-a
44. Carvalho Ribeiro, S., (2019), *Landscape Aesthetics Capacity as a Cultural Ecosystem Service*, în von Haaren Christina, Lovett, A.A., Albert, C., (Ed.), *Landscape Planning with Ecosystem Services Theories and Methods for Application in Europe*, Landscape Series, Vol. 24, Ed. Springer
45. Ciangă, N., (2007), *România. Geografia turismului*, Ed. Presa Universitară Clujană, Cluj-Napoca
46. Ciangă N., Dezi Ș., (2007), *Amenajare turistică*, Editura Presa Universitară Clujeană, Cluj-Napoca
47. Cocean, P., (1996), *Geografia turismului*, Ed. Caro, București
48. Cocean, P. (1997), *Țara (The land) – a Typical Geographical Region of Romania*, in: Revue roumaine de géographie, Tom 41, București
49. Cocean, P., Ciangă, N. (2000), *The Countries as Mental Spaces*, in: Revue Roumaine de Géographie, Tom 43-44, București
50. Cocean, P. (2004), *Structura spațiului mental românesc [Structure of the Romanian Mental Space]*, 2004, in: Studia UBB, nr. 1, Cluj-Napoca
51. Cocean, P. (2005), *Geografie regională. Evoluție, concepte, metodologie [Regional Geography. Evolution, Concepts, Methodology]*, Ediția a II-a, Editura Presa Universitară Clujeană, Cluj-Napoca
52. Cocean, P., (2008), *Stages in the Formation of the Romanian Mental Space*, Romanian Review of Regional Studies Volume IV, No. 2
53. Cocean, P., Filip, S., (2008), *Geografia regională a României*, Editura: Presa Universitară Clujeană , Cluj-Napoca
54. Cocean, P., (2010), *Geografie regională*, Editura Presa Universitară Clujeană, Cluj-Napoca
55. Cocean, P., (coord.), (2010), *Planificarea și amenajarea teritoriului zonal, Studiu de caz: Valea Hârtibaciului*, Editura Presa Universitară Clujeană, Cluj-Napoca
56. Cocean, P., Filimon, Luminița, (2012), *Advocacy for the Romanian Lands as Project Territories*, Romanian Review of Regional Studies, Vol. VIII, No. 2
57. Cocean, P., David, Nicoleta (2014), *Peisaje culturale*, Editura Risoprint, Cluj-Napoca
58. Constantin, Anița, (2016), *Tourism Potential of Cultural Landscapes in Hârtibaciu Valley*, Geographia Napocensis Anul X, nr. 1

59. Constantin, Anița, (2017), *Landsat Images Analysis of the Extension of Water Vegetation in the Brădeni Lakes in the Hârtibaciu River Basin*, at Air and Water – Components of the Environment International Conference, Cluj-Napoca
60. Constantin, Anița, Constantin, Marioara-Palagica, *Cartographic Perspective Of The Evolution Of Settlements From The Hârtibaciu Valley In Transylvania, Romania. Case Study: The Settlement Of Agnita*, trimis spre publicare revistei *GeoCarto International*
61. Constantin, Anița, Constantin, Marioara-Palagica, *Resilient Tangible Saxon Heritage in the Cultural Landscapes in the Hârtibaciu Valley in Transylvania, Romania*, acceptat spre publicare în revista *Transylvanian Review*
62. Cosgrove, D., Jackson, P., (1987), *New Directions in Cultural Geography*, în *Area*, Vol. 19, No. 2 , P. 95-101, Ed. The Royal Geographical Society (with the Institute of British Geographers)
63. Csorba, P., Szabo, S. (2012). *The Application of Landscape Indices in Landscape Ecology, Perspectives on Nature Conservation - Patterns, Pressures and Prospects*, Ed. Prof. John Tiefenbacher
64. Czepczyński, M., (2016), *Cultural Landscapes of Post-socialist Cities: Representation of Powers and Needs*, Routledge, London-NY
65. David, N., (2014), *Premisele afirmării peisajului cultural în Țara Zarandului*, *Geographia Napocensis*, Anul VIII, Nr. 2
66. Deac, Simona, Octavia, Păcurar, B., N., Irimuş, I.,A., Trifu, Teodora, *The Aesthetic and Ecological Values of Cluj-Napoca Urban Landscape*, *Studia UBB Geographia*, LIX, 1, 2014, pp. 155-164
67. Dej, Gh., Ghe., (1955), *Articole și cuvântări*, Ed. De Stat pentru Literatură Politică, București
68. Delpoux, M., *Écosystème et paysage*, Delpoux Marcel. Écosystème et paysage. In: *Revue géographique des Pyrénées et du Sud-Ouest*, tome 43, fascicule 2, 1972, Actes du premier colloque sur la science du paysage. pp. 157-174
69. Demuth, B., (2000), *Das Schutzgut Landschaftsbild in der Landschaftsplanung. Methodeniüberprüfung anhand ausgewählter Beispiele der Landschaftsrahmenplanung*, Ed. Mensch und Buch, Berlin
70. Di Fazio, S., Modica, G., (2018), *Historic Rural Landscapes: Sustainable Planning Strategies and Action Criteria. The Italian Experience in the Global and European Context*, în *Sustainability*, 10, 3834.
71. Dincă, I., (2005), *Peisajele geografice ale Terrei. Teoria peisajului*, Editura Universității din Oradea, Oradea
72. Djuvara, N., (2011), *Kurze Geschichte der Rumänen*, Ed. Monumenta, Sibiu
73. Drăguț, L., (2000), *Evaluarea peisajelor geografice din teritoriul administrativ al mncipiului Cluj-Napoca*, *Studia Universitatis Babeş-Bolyai, Geographia*, ZLV,1
74. Draguț, L., (2000), *Geografia peisajului*, Editura Presa Universitară Clujeană, Cluj-Napoca
75. Drăguț, V., (1979), *Arta gotică în România*, Ed. Meridiane, București
76. Dramstad, W.,E., Olson, J.,D., Forman, R.,T.,T., (1996), *Landscape Ecology Principles in Landscape Architecture and Land-Use Planning*, Ed. Island Press, P.19- 46
77. Dücker, Julia, (2013), *Das Religionsedikt von Thorenburg (1568)*, în Bahlcke, J., Stefan Rohdewald, Thomas Wunsch (Hrsg.): *Religiöse Erinnerungsorte in Ostmitteleuropa: Konstitution und Konkurrnz im nationen- und epochenübergreifenden Zugriff*, Ed. Akademie, Berlin
78. Dumitran, D., (2007), *Edictul de toleranță iozeîn în Transilvania: repere istoriografice și perspective ale cercetării*, în *Annales Universitatis Apulensis Series Historica* 11, I
79. Eberle, D., (1977), *Ein Computermmodell der Verflechtung zwischen Wohn-und Naherholungsgebieten der Region Hannover. Ein demometrischer Ansatz für die Verkehrs-, Freizeit- und Raumplanung*, Ed. Springer, Basel
80. Eliade, M., (2000), *Istoria credințelor și ideilor religioase*, Ed. Univers Enciclopedic, București
81. Esmark, J., (1798), *Kurze Beschreibung einer mineralogischen Reise durch Ungarn, Siebenbürgen und das Bannat*, Ed. Grazische Buchhandlung, Frenberg
82. Fabini, H. (2002), *Atlas der siebenbürgisch-sächsischen Kirchenburgen und Dorfkirchen*, Monumenta Sibiu Verlag und der Arbeitskreis für Siebenbürgische Landeskunde, Heidelberg
83. Fabrizio-Dancu, Iuliana, (1980), *Cetățile jărănești săsești din Transilvania*, *Revista Transilvania*, Sibiu, P. 17
84. Farina, A., (2000), *Principles and Methods in Landscape Ecology*, Kluwer Academic Publishers, Dordrecht, The Netherlands
85. Farina, A., (2001), *Landscape and Their Ecological Components*, *The Living World*, Vol. IV
86. Farina, A., (2006), *Principles and Methods in Landscape Ecology. Toward a Science of Landscape*, Ed. Springer, Dordrecht
87. Farina, A., (2010), *Ecology, Cognition and Landscape. Linking Natural and Social Systems*, Ed. Springer
88. Finke, L., (1994), *Landschaftsökologie*, Editura Westermann, Braunschweig
89. Fischer, Lisa, (2007), *Eden hinter den Wäldern*, Ed. Hora, Sibiu

90. FISGRW, (1998), *Stream Corridor Restoration: Principles, Processes and Practices*, The Federal Interagency Stream Restoration Working Group; Online: <https://www.nrcs.usda.gov/wps/portal/nrcs/detailfull/national/water/manage/restoration/?cid=stelprdb1043448>
91. Franke, A., (2010), *Das wehrhafte Sachsenland. Kirchenburgen im südlichen Siebenbürgen*, Deutsches Kulturforum östliches Europa, Potsdam
92. Fröhlich, J., (1926), *Einiges über die Waldwirtschaft in Siebenbürgen*, în *Forstwissenschaftliches Zentralblatt*, 1. Maiheft, Vol. 48, Nr. 5, Ed. Springer Berlin Heidelberg
93. Frohn, R., C., (1998), *Remote Sensing for Landscape Ecology: New Metric Indicators for Monitoring, Modeling, and Assessment of Ecosystems*, Ed. Lewis Publishers, Boca Raton-London-New York-Washington D.C., P.1
94. Gabriel, S., (2018), *Silvopasture : a guide to managing grazing animals, forage crops, and trees in a temperate farm ecosystem*, Chelsea Green Publishing, White River Junction, Vermont
95. Gârbacea, V., Grecu, Florina, (1981), *Relieful de glimee din Podișul Transilvaniei si potențialul lui economic*, Memoriile secțiilor științifice, seria IV, tomul IV, nr 2, Ed. Academiei, București
96. Gavra, Camelia-Ina, (2014), *Peisaje culturale în Munții Metaliferi*, Editura Risoprint, Cluj-Napoca
97. Gerhards, I., (2003), *Die Bedeutung der landschaftlichen Eigenart für die Landschaftsbildbewertung dargestellt am Beispiel der Bewertung von Landschaftsbildveränderungen durch Energiefreileitungen*, în *Culterra*, Ed. Institut für Landespflege der Albert-Ludwigs-Universität, Freiburg, Nr. 33
98. Gilg, A., W., (1975), *The Objectivity of Linton Type Methods of Assessing Scenery as a Natural Resource*, *Regional Studies*, Vol. 9, Nr. 2, P. 181-191
99. Giurescu, C., (1946), *Istoria Românilor*, Fundația Regală pentru Literatură și Artă, București, vol. III
100. Giurescu, C., C., (1946), *Istoria Românilor din cele mai vechi timpuri până la moartea lui Alexandru cel Bun (1432)*, Ed. A V-a, vol. I., Fundația Regală pentru Literatură și Artă, București
101. Giurescu, C., C., (1976), *Istoria pădurii românești din cele mai vechi timpuri până astăzi*, Ed. Ceres, Ed. a 2-a, București
102. Gligor, V., Filip, S., David, Nicoleta, Cocean, P., (2014), *Potențialul de dezvoltare agroturistică a microregiunii Tășnad*, *Geographia Napocensis*, Anul VIII, Nr. 2
103. Glink, Chr., Meyer, H.H., Schottke, Maja, (2007), *Historical Cultural Landscapes in Romania. Mapping and Registration of Endangered Traditional Cultural Landscape elements in Transylvania – first methodical approach in the sample region of Bistrita*, *Romanian Review of Regional Studies*, Vol. III, Nr. 2
104. Gökyer, Ercan, (2013), *Understanding Landscape Structure Using Landscape Metrics*, în *Ozyavuz , M., (Ed.), Advances in Landscape Architecture*, Ed. IntechOpen
105. Gräf, R., (2007), *Zigeuner. Die Architektur der Roma in Rumänien*, Ed. Academiei, Cluj-Napoca
106. Grecu, Floare, (1986), *Bazinul hidrografic Hârtibaciu*, Teza de doctorat, București
107. Grecu, Florina, (1992), *Bazinul Hârtibaciului. Elemente de morfohidrografie*, Ed. Academiei Române, București
108. Grecu, Florina, Sandu, Maria, (2012), *The Hârtibaciu Tableland. Geomorphological Risks*, *Analele Universității București, Geografie*
109. Grigorovschi, M., Grigorovschi Andreea, (2012), *Arhitectură peisageră, proces semiotic*, *Urbanism. Arhitectură. Construcții*, Vol.1, Nr.2
110. Gyémánt, L., (2018), *Istoria evreilor până la crearea României Mari*, în: Filipovici, Anca, Gidó, (Ed.), *Trecutul prezent. Evreii din România: istorie, memorie, reprezentare*, Institutul pentru Studiarea Problemelor Minorităților Naționale, Cluj-Napoca
111. Haaren von, Christina, (2004), *Landschaftsplanung*, Ediția I., Ulmer UTB, Ulm
112. Hagen, T., (2013), *Der Schulhausbau als nationalitätenpolitisches Konfliktfeld im Ungarn der Doppelmonarchie. Ein Beitrag zur Untersuchung gesellschaftlicher Ordnungsvorstellungen in der Architektur Siebenbürgens*, în *Minderheitenfragen in Ungarn und in den Nachbarländern im 20. und 21. Jahrhundert*, Ed. Nomos, Baden-Baden
113. Hall, M., C., Page, S., J., (2002), *The Geography of Tourism and Recreation: Environment, Place and Space*, Ed. Routledge, London-New York, Ed a 2-a
114. Hanganu, J., Constantinescu, A., *Land Cover Changes in Romania Based on CORINE Land Cover Inventory 1990–2012*, *Rev. Roum. Géogr./Rom. Journ. Geogr.*, Nr. 59, (2), p. 111–116, 2015, București
115. Haret Michel, (1926), *Le paysage alpin carpatique et son interprétation botanique*, Editura Allier Père
116. Hartel T., Hanspach, J., Moga, C., I., Holban, L., Szapanyos, Á., Tamás, Réka, Hováth, C., Réti, Kinga-Olga, (2018), *Abundance of large old trees in wood-pastures of Transylvania (Romania)*, in *Science of The Total Environment*, Vol. 613–614, P. 263-270
117. Hauer, Franz Ritter von, Stache, Guido, (1863) *Geologie Siebenbürgens*, K.K.Hofbuchhändler, Wien
118. Hermes, J., Albert, C., von Haaren, Christina, (2018), *Assessing the Aesthetic Quality of Landscapes in Germany*, *Ecosystem Services*, Elsevier, vol. 31(PC), P. 296-307

119. Herold, Ann-Katrin, Schöttke, Ph., (2001), *Analyse und Bewertung von Kulturlandschaften: Das Mittelrheintal als UNESCO-Welterbe in Kulturlandschaft*, în *Zeitschrift für angewandte historische Geographie*, An 11, Nr. 1
120. Hillbrand, E., (1975), *Die Kartensammlung des Kriegsarchivs Wien*, în *Mitteilungen des Österreichischen Staatsarchivs*, , 28/1975, P. 183-196, Online: https://library.hungaricana.hu/en/view/Mosta_28/?pg=196&layout=s
121. Hilpert, M., Mahne-Bieder, J., (2017), *Kartierung der historischen Kulturlandschaft. Eine kritische Evaluation der Inventarisierungsmethoden*, în *Kartographische Nachrichten* 67(1):23-26, Ianuarie 2017
122. Hoffmann, G., (1999), *Tourismus in Luftkurorten Nordrhein-Westfalens. Bewertung und Perspektiven*, (Teză de doctorat), P.15-16 și Kiemstedt, H., (1967), *Zur Bewertung der Landschaft für die Erholung*, în *Beiträge zur Landschaftspflege*, Sonderheft 1, Stuttgart, Ed. Eugen Ulmer
123. Horvath, I., Nastasă, L., (2012), *Rom sau Țigan. Dilemele unui etnonim în spațiul românesc*, ed. ISPMN, Cluj
124. Hülsemann, J., (2012), *Das sächsische Bauernhaus in Siebenbürgen*, Ed. Interessengemeinschaft Bauernhaus, Worpsswede
125. Iagăr, E. M. (coord.), (2016), *Populația României pe localități (după domiciliu) la 1 iulie 2016*, Ed. INS
126. Ielenicz, M., Comănescu Laura, (2003), *Geografie fizică generală. Bazele geografiei fizice*, Editura Universitară, București
127. Ielenicz, M., Comănescu, Laura, (2006), *România. Potențial turistic*, Editura Universitară, București
128. Ignat, I.-C., (2015), *O analiză cu privire la hramul bisericilor săsești din Bazinul Hârtibaciului*, în *Oameni și comunități în jurul Carpaților*, Țiplic, I., M., (Ed.), Cluj-Napoca, Ed. Academia Română: Centrul de studii Transilvane
129. Ignat, I.-C., (2012), *Biserici fortificate de pe Valea Hârtibaciului*, în *Buletinul Cercului de Mediavistică „Radu Popa”*, nr. V-VII, Ed. Univ. „Lucian Blaga” Sibiu
130. Ilieș Marin, Ilieș Gabriela, Hotea Mihai, (2013), *Studii asupra zonei „Grupul de Acțiune Locală Mara-Gutâi” Maramureș*, Sighetu Marmației
131. Ionescu, G., (1937), *Istoria arhitecturii românești din cele mai vechi timpuri până la 1900*, Ed. Cartea Românească, București
132. Iorga, N., (1908), *Istoria bisericii românești și a vieții religioase a românilor*, vol. I, Ed. Neamul Românesc, Vălenii de Munte
133. Jenness, J.S., (2004), *Calculating landscape surface area from digital elevation models*, *Wildlife Society Bulletin* 32, 829–839
134. Jones, M., (2003), *The concept of cultural landscape: discourse and narratives*, in *Landscape Interfaces. Cultural Heritage in Changing Landscapes*, Hannes Palang, Gary Fry, Springer-Science+Business Media, B.Y
135. Karp, A., (2006), *Ein Internet-Destinationsinformationssystem zur Marktkommunikation im Tourismusmarketing. Grundlagen, Konzeption und exemplarische Umsetzung mit einer WebGIS-Software am Beispiel der Wanderdestination Rothaarsteig*, Ed. Diplomica, Hamburg
136. Kirchhoff, T., Brand, S., Fridolin, Hoheisel, Deborah, (2012), *From cultural landscapes to resilient social-ecological systems: transformation of a classical paradigm or a novel approach?*, în *Resilience and the Cultural Landscape. Understanding and Managing Change in Human Shaped Environments*, Ed. Cambridge University Press, P. 49-64
137. Klein, H., *Das Schulwesen der Sachsen in Siebenbürgen*, în *Der Ungar*. An I., Nr. 72, 29.03.1842
138. Körner, Fr., (1858), *Vaterländische Bilder aus Ungarn und Siebenbürgen, der Woiwodina und dem Banat, Kroatien, Slavonien, der Militärgrenze sowie Dalmatien in Schilderungen aus Natur, Geschichte, Industrie und Volksleben: Bilder aus Ungarn*, Band 3, Ed. Otto Spamer, Leipzig
139. Körner, S., (2001), *Landschaftsentwicklung und Umweltforschung. Theorie und Methodologie der Landschaftsplanung, Landschaftsarchitektur und Sozialwissenschaftlichen Freiraumplanung vom Nationalsozialismus bis zur Gegenwart*, Schriftenreihe der Fakultät Architektur Umwelt Gesellschaft, Nr. 118, Berlin
140. Krebs, N., (1923), *Natur und Kulturlandschaft: Vortrag gehalten auf der Festsitzung am 5. Mai 1923*, în *Zeitschrift der Gesellschaft für Erdkunde zu Berlin*, P. 81 – 94
141. Kroner, M., (2015), *Die untertänigen sächsischen Gemeinden auf Komitatsboden*, Ed. Schiller, Hermannstadt-Bonn
142. Kröber, H., (2001), *Natur und Landschaft in Niedersachsen: die Naturdenkmal-Typen*, Ed. Schlütersche, Hannover
143. Lardon, Sylvie, Piveteau, V., (2005), *Méthodologie de diagnostic pour le projet de territoire : une approche par les modèles spatiaux*, *Geocarrefour*, No.80/2

144. Lausch, Angela, Blaschke, T., Haase, Dagmar, Herzog, F., Syrbe, R.-U., Tischendorf, L., Walz, U., (2015) *Understanding and quantifying landscape structure – A review on relevant process characteristics, data models and landscape metrics*, Ecological Modelling 295
145. Lebrecht, M., (1804), *Versuch einer Erdbeschreibung des Grossfürstentums Siebenbürgen*, Ed. Martin Hochmeister, Hermannstadt, Localități: P. 142-144, Hârtibaciu: P. 152
146. Li, H., Wu, J., (2004), *Use and misuse of landscape indices*, în *Landscape Ecology*, Nr. 19, 2004, Ed. Kluwer Academic Publishers
147. Logemann, D., (2002), *Das heutige Schulwesen der Siebenbürger Sachsen vor dem Hintergrund seiner Geschichte – auf den Spuren seines Erfolgs*, în *Zeitschrift für Balkanologie*, Vol. 38, Nr. 1-2, Ed. Harrassowitz
148. Löher von, F., (1874), *Die Magyaren und andere Ungarn*, Ed. Fues, Leipzig
149. Luca, S. A., Zeno, K. P., Georgescu, A., (2003), *Repertoriul arheologic al județului Sibiu*, Editura Economică, Sibiu
150. Luick, R., Schuler, H.-K., (2008), *Waldweide und forstrechtliche Aspekte*, Berichte des Institutes für Landschafts- und Pflanzenökologie der Univ. Hohenheim, Nr. 17, Stuttgart-Hohenheim
151. Lupaș, I., (1918), *Istoria bisericească a românilor ardeleni*, Ed. și tiparul tipografiei arhidiecezane, Sibiu
152. Lutsch, Helga, (2016), *Zum 170. Geburtstag von Carl Pildner von Steinburg*, în *Agnethler Blatt*, Nr. 86, 27. Jahrgang / September 2016
153. Mac, I., (1990), *Peisajul geografic. Conținut și semnificație științifică*, Editura Terra, București
154. Mac, I., (2000), *Geografie generală*, Ed. Europontic, Cluj-Napoca
155. Mackovčín, P., Slavík, P., Demek, J., Tábor, I., (2011), *Landscape Atlas of the Czech Republic*, în *Acta Pruhoniciana*, Nr. 98
156. Macrea, M., Dobroiu, E., Lupu, N., (1959), *Șantierul arheologic Cașoț-Calbor*, în *Materiale și cercetări arheologice V*
157. Magagna, Barbara, (1996), *Bewertung der Eingriffe von Abwasserentsorgungsprojekten auf das Landschaftsbild und die Erholungseignung von Landschaftsräumen*, în *Wiss. Mitt. Niederösterreich. Landesmuseum*, Nr. 9, Viena
158. Marschall, Ilke, (2014), *Kulturlandschaftsanalyse in Forschung, Praxis und im Studium der Landschaftsplanung*, Conferința „Namen und Kulturlandschaften“, 1.-2. Octombrie 2014 la FSU Jena
159. Maull, O., (1925), *Zur Geographie der Kulturlandschaft*, în *Freie Wege vergleichender Erdkunde*, Erich von Drygalski zum 60. Geburtstag, München
160. Mihăilescu, V., (1968), *Geografie teoretică*, Editura Academiei, București
161. Mildenberg, Benigni von, J., H., (1837), *Handbuch der Statistik und Geographie des Großfürstentums Siebenbürgen*, W. H. Thierrys Buchhandlung, Sibiu
162. Mildenberg, Benigni von, J., H., Neugeboren, C., (1833), *Transsilvania: periodische Zeitschrift für Landeskunde*, Ed. Thierr, Hermannstadt
163. Mitchell, Nora, Rössler, Mechtild, Tricaud, Pierre Marie, (2009), *World Heritage cultural landscapes: a handbook for conservation and management*, World Heritage Papers 26, UNESCO World Heritage Center, Paris. Online: <https://unesdoc.unesco.org/ark:/48223/pf0000187044>
164. Moldt, D., (2009), *Deutsche Stadtrechte im mittelalterlichen Siebenbürgen. Korporationsrechte – Sachsenspiegelrecht – Bergrecht*, Ed. Böhlau Köln Weimar Wien
165. Morariu, T., Gârbacea, V., (1968), *Prozesse der Hangentwicklung in Rumänien*, Sonderabdruck aus „Petermanns Geographische Mitteilungen“, 2. Quartalsheft, Geographische Gesellschaft der DDR, Gotha/Leipzig
166. Morariu, T., Gârbacea, V., (1968), *Studii asupra proceselor de versant din Depresiunea Transilvaniei*, în *Studia Universitatis Babeș-Bolyai*, Series Geologia-Geographia, Fasciculus 1, Cluj
167. Mugnier, C., J., (2004), *Republic of Austria*, în *Grids & Datums - Photogrammetric Engineering & Remote Sensing*, Martie 2004, Nr. 70 (3)
168. Muhar, A. (1994), *Methodische Probleme bei der Bewertung komplexer Qualitäten*, în *Salzburger Institut für Raumordnung und Wohnen, SIR-Mitteilungen und Berichte*, Nr. 1-4, Salzburg, P. 19-27
169. Muhar, A., (1994), *Landschaft von gestern für die Kultur von morgen?*, în *Topos - European Landscape Magazine*, Nr. 6/94
170. Müller, K., (2006), *Glanz und Elend eines Pioniers aus Agnetheln*, în *Agnethler Blatt*, Nr. 56, An 19/Aprilie 2006
171. Munteanu, I., (1981), *Sibiu - Județele patriei*, Editura Sport Turism, București
172. Mureșan, Felicia, (2012), *Potențialul turistic cultural din bazinul Hârtibaciului și valorificarea lui*, București
173. Murgescu, B., (2001), *Istoria României în texte*, Ed. Corint, București
174. Neuguț, S., (2003), *Geografie economică mondială*, Ed. Meteor Press, București

175. Niedermaier P., (2008), *Städte, Dörfer, Bauwerke: Studien zur Siedlungs- und Baugeschichte Siebenbürgens*, Ed. Böhlau, Köln-Weimar
176. Nistor, I., I., (2002), *Istoria Românilor*, Ed. Biblioteca Bucureștilor, București
177. Nistor, M. M., *Using Landsat Images and GIS to Assess the Changes of Mer de Glace and Marmolada Glaciers, in the Last Three Decades*, în *Studia UBB Geographia*, LIX, 1, 2014, pp. 65-76
178. Öllerer, Kinga, (2014), *The ground vegetation management of wood pastures in Romania—Insights in the past for conservation management in the Future*, *Applied Ecology and Environmental Research*, 12(2), Budapest, P. 558-559
179. Oprescu, G., (1957), *Bisericile cetăți ale sașilor din Ardeal*, Ed. Academiei Rep. Pop. Române, București
180. Păcurar, Al., (2006), *Geografie economică mondială*, Ed. Presa Universitară Clujană, Cluj-Napoca
181. Palang H., Fry G., (2003), *Landscape Interfaces. Cultural Heritage in Changing Landscapes*, Springer Science + Business Media Dordrecht
182. Paraschiv V., (2011), *Dinamica spațială și temporală a peisajelor în Depresiunea Giurgeului*, Editura Universitatea Alexandru Ioan Cuza, Iași
183. Pârvan, V., (1926), *Getica*, Ed. Cultura Națională, București
184. Pascu, Ș., (1954), *Meșteșugurile din Transilvania, până în secolul al XVI-lea*, Ed. Academiei, București
185. Pătru-Stupariu, Ileana, (2011), *Elaborating and implementing an algorithm for the landscape evaluations and prognosis. Applications in the mountainous and sub-carpathian sectors of Prahova Valley*, Editura Universității din București, București
186. Pătru-Stupariu, Ileana, (2011), *Peisaj și gestiunea durabilă a teritoriului. Aplicații la Culoarul transcarpatic Bran-Rucăr-Dragoslavele*, Ed. Universității din București, București
187. Pătru-Stupariu, Ileana, Stupariu, M. S., Huzui, Alina, (2010), *Mathematical models used for visual assesment of the landscape in situ – Case study Sinaia town*, *Forum geografic. Studii și cercetări de geografie și protecția mediului*, An 9, Nr. 9/ 2010
188. Petrescu-Dâmbovița, M.(coord.), Vulpe, A., (coord.), (2001), *Istoria Românilor*, Ed. Enciclopedică, vol. I, București
189. Petzhold, H. J., (2007), *Niederroßla. Kulturlandschaft und Geschichte*, Editura Jütte-Messedruck, Leipzig
190. Pildner, F., (1902), *Das Groß-Kokler Komitat*, în *Die Österreichisch-ungarische Monarchie in Wort und Bild*, Ed. K.K. Hof- und Staatsdruckerei, Ungarn, Vol. VI, Viena
191. Pleșia, Damaris, (2011), *Dinamica structurii și repartiției categoriilor de utilizare a terenurilor în Depresiunea Apoldului*, *Geo-Carpathica*, Sibiu, XI, Nr. 11, P. 245-250
192. Pop, E., (1943), *Pădurile și destinul nostru național*, în *Carpații. Vânătoare/Pescuit/Chinologie*, An XI, Nr. 6, Sibiu
193. Pop, G., (2001), *Depresiunea Transilvaniei*, Ed. Presa Universitară Clujeană, Cluj-Napoca
194. Popa, C., (2010), *Date privind ocupațiile tradiționale ale unor comunități rurale din Valea Hârtibaciului*, în *Cibinium 2009-2010*, Ed. "Astra Museum", Sibiu
195. Popescu, Antoaneta-Carina, (2010), *Formarea competențelor de percepție și interpretare a unui peisaj geografic*, *Romanian Journal of Education*, Vol. 1, Nr. 3-4
196. Popescu-Spineni, M., 1978, *România în izvoare geografice și cartografice, din antichitate până în pragul veacului nostru*, Ed. Științifică și enciclopedică, București
197. Popovici, Ana, Bălțeanu, D., Kucsicsa, Gh., (2013), *Assessment of changes in land-use and land-cover pattern in Romania using Corine Land Cover Database*, în *Carpathian Journal of Earth and Environmental Sciences*, Vol. 8, Nr. 4
198. Poschlod, P., (2014), *Kulturlandschaft, Landnutzungswandel und Vielfalt*, in *Handbuch Genbank*, Hoppea, Regensburg
199. Posea, G., (2005), *Geomorfologia României: relieful, tipuri, geneză, evoluție, regionale*, Ediția a II-a, Editura Fundației România de Măine, București
200. Potthoff, Kerstin, (2013), *The use of 'cultural landscape' in 19th century German geographical literature*, *Norsk Geografisk Tidsskrift - Norwegian Journal of Geography*, P. 49-54
201. Puiu, V., Mitran, Cristina Monica, (2008), *Microrregions and the Elimination of the Regional Disparities*, *Romanian Review of Regional Studies*, Vol. IV, No. 1
202. Ratzel, Fr., (1901), *Der Lebensraum. Eine biogeographische Studie*, Ed. h. Laupp'schen Buchhandlung, Tübingen
203. Reusser, J., Moser, R., (2011), *Ackerterrassen-ein vergessenes Kulturgut*, Amt für Raumplanung Thurgau, Bern
204. Rohbock, L., Hunfalvy, J., (1857), *Ungarn und Siebenbürgen in malerischen Original-Ansichten: ihrer interessantesten Gegenden, Städte, Badeorte, Kirchen, Burgen, Paläste und fonstigen Baudenkmäler alter und neuer Zeit*, Ed. Gustav George Lange, Darmstadt

205. Roșca, Karla, Ștefan, Camelia, (2008), *Repere cultural-istorice ale civilizației multiculturale transilvane: Valea Hârtibaciului*, Editura Astra Museum, Sibiu
206. Roser, F., (2008), *Entwicklung einer Methode zur flächendeckenden, GISbasierten, Bewertung des Landschaftsbildes*, în Strobl, J., (Ed.), *Angewandte Informatik 2008. Beiträge zum 20. AGIT-Symposium Salzburg*, Ed. Wichmann, Heidelberg
207. Roth, H., (2006), *Mică istorie a Transilvaniei*, Ed. Pro Europa, Tg. Mureș
208. Roth, M., Bruns, Elke, (2016), *Landschaftsbildbewertung in Deutschland – Stand von Wissenschaft und Praxis*, Ed. BfN, Nr. 439, Bonn
209. Roth, M., Hildebrandt, S., Röhner, Sina, Tilk, C., Schwarz von Raumer, H.-G., Roser, F., Borsdorff, Milena, (2018), *Landscape as an Area as Perceived by People: Empirically-based Nationwide Modelling of Scenic Landscape Quality in Germany*, în *Journal of Digital Landscape Architecture*, Ed. VDE, Berlin - Offenbach, Nr. 3
210. Roth, V., (1905), *Geschichte der deutschen Baukunst in Siebenbürgen*, Strassburg, Ed. Heitz & Mündel
211. Roubitschek, W., Schönfelder, G., (2010), *Otto Schlüter (1872–1959). Sein Wirken für die Geographie und die Leopoldina*, în *Denkströme. Journal der Sächsischen Akademie der Wissenschaften*, Heft 5, 2010, P. 227-232, Online: http://www.denkstroeme.de/heft-5/s_227-232_roubitschek-schoenfelder
212. Ruprecht, Eszter, Szabó, Anna, Márton, Z., Enyedi, D., J., (2009), *Steppe-like grasslands in Transylvania (Romania): characterisation and influence of management on species diversity and composition*, *Tuexenia* 29, Göttingen
213. Rus, D.-I., (2004), *Însemne mesteșugărești din Agnita (I)*, în *Sargetia*, vol. XXXII, Deva, P. 19-30
214. Rus, D.-I., (2012), *Steaguri de breaslă din Agnita*, în *Gazeta Hârtibaciului*, Nr. 68
215. Rusu, R., Man, T., Fodorean, I., Moldovan, C., (2010), *The Analysis of land use based on Corine Land Cover in the Romanian Part of the Tisa Catchment Area*, *Romanian Review of Regional Studies*, Vol. VI, No. 2
216. Sârbu, C., (2011), *Peisaj cultural și dezvoltare*, Ed. Univ. Ion Mincu, București
217. Sauer, C., O., (1925), *The Morphology of Landscape*, University of California Publications in Geography 2
218. Scharberg, von, J. B., (1844), *Die Verfassung des Grossfürstenthums Siebenbürgen aus dem Gesichtspunkte der Geschichte, der Landesgesetze und des bestehenden öffentlichen Rechtes*, Ed. Carl Georg, Wien
219. Schmidt, A., (1845), *Österreichische Blätter für Literatur und Kunst, Geografie, Geschichte, Statistik und Naturkunde*, Ed. A. Strauss, Wien
220. Schreiber, E., W., (2012), *Risiken im Kulturlandschaftswandel*, *Riscuri și catastrofe*, Nr. XI, vol. 11, nr. 2/2012
221. Schreiber, E., W., Turcu, Corina, Constantin, Anița, (2008), *Schutz- und Verwertungsstrategien von historischen Kulturlandschaften*, *Geographia Napocensis Anul II*, Nr. 2
222. Schreiber, W., Baci, N., (2008), *Die historischen Kulturlandschaften Rumäniens und ihre Verwertungsmöglichkeiten*, în *Geographia Napocensis Anul II*, Nr. 1
223. Schreiber, W., Stoica, Flavia, (2008), *Peisaje culturale istorice*, Editura Argonaut, Cluj-Napoca
224. Schuller, G. A., (1895), *Aus der Vergangenheit der siebenbürgisch-sächsischen Landwirtschaft*, Sibiu
225. Simonds, J., O., (1961), *Landscape architecture. The Shaping of Man's Natural Environment*, McGraw-Hill Book Company, Inc., NY-Toronto-London
226. Smoler, F. X., (1847), *Historische Blicke auf das Forst- und Jagdwesen*, Ed. Gottlieb Haase Söhne, Praga
227. Söllner, J., (1856), *Statistik des Grossfürstenthums Siebenbürgen*, Ed. Theodor Steinhaussen, Hermannstadt
228. Sorg, M., Sumser, H., Schwan, H., (2014), *Kartierung und Bewertung von Feldwegen in der Kulturlandschaft*, Landesgemeinschaft Naturschutz und Umwelt Nordrhein-Westfalen e.V.
229. Spellerberg, I., F., (1992), *Evaluation and Assessment for Conservation: Ecological guidelines for determining priorities for nature conservation*, Ed. Chapman & Hall, London
230. Stäblein, G., (1989), *Parameter und Indizes zur Bewertung des Naturraumpotentials Beispiele aus Nordhessen*, în *Erdkunde*, Vol. 43, Nr. 3, Sept. 1989, P. 179-191
231. Ștefan, Ghe., Iliescu, V., Popescu, V., C., (1964), *Izvoare privind istoria României*, vol. I, Ed. Academiei Rep. Pop. Rom., București
232. Steihardt, Uta, Blumenstein, O., Barsch, H., (2012), *Lehrbuch der Landschaftsökologie*, Ed. Spektrum, Ed. a 2-a
233. Stoicescu, Iona, Pătru-Stupariu, Ileana, Hossu, Constantina-Alina, Peringer, A. (2019), *Land Use Guidelines to Maintain Habitat Diversity of Wood-Pastures in the Southern Carpathians Under Projected Climate Change*, în *Landscape Online*, vol. 74
234. Surd, V., (2003), *Geografia așezărilor*, Presa Universitară Clujeană, Cluj Napoca
235. Sutcliffe, Laura, Öllerer, Kinga, Roellig, Marlene, (2014), *Wood-pasture management in southern Transylvania (Romania)*, in *European Wood-pastures in Transition*, Ed. Routledge, London New York

236. Swanwick, C., (2002), *Landscape Character Assessment Guidance for England and Scotland*, Department of Landscape-University of Sheffield
237. Țărău, D., Dicu, D., (2014), *Cartarea și bonitarea solurilor*, Timișoara
238. Teutsch, F., (1896), *Die Art der Ansiedlung der siebenbürger Sachsen*, Stuttgart, Ed. J. Engelhorn
239. Teutsch, F., Schuller, F., (1895), *Die Art der Ansiedlung der Siebenbürger Sachsen. Volksstatistik der Siebenbürger Sachsen*, Ed. J. Engelhorn, Stuttgart
240. Teutsch, G., D., (1874), *Geschichte der Siebenbürger Sachsen für das sächsische Volk*, 2. Auflage, 1. Band, Ed. S. Hirzel, Leipzig
241. Timár, G., Molnár, G., Székely, B., Biszak, S., Varga, J., Jankó Annamária, (2008), *Planurile celei de-a doua ridicări topografice și varianta lor georeferențiată*, în *Revista de Geodezie, Cartografie și Cadastru*, Nr. 17 (1, 2)
242. Tomescu C. V., (2006-2007). *Arhitectură peisageră și design forestier - Suport de curs*. Universitatea „Ștefan Cel Mare” Suceava, Facultatea de Silvicultură, Suceava
243. Trachet, J., *Mapping/Painting the Medieval Landscape. A Landscape-archaeological analysis of the medieval landscape as depicted by Pieter Pourbus*, in *e-Perimetron*, Vol. 13, No. 2, 2018 [112-120]
244. Treuenfeld von, I., L., (1839), *Siebenbürgens geographisch-, topographisch, statistisch, hzdrographisch und orographisches Lexikon*, Volume 1-4, Ed. Anton Strauss, Wien (P. 51, 98, 119, 214 etc.) Vannieuwenhuyze, B., (2015), *Reading History Maps-The Siege of Ypres Mapped by Guillaume du Tielt*, *Quarendo* 45 (2015) 292-321
245. Tröster, J., (1666), *Das Alt- und Neu-Teutsche Dacia. Das ist: Neue Beschreibung des Landes Siebenbürgen : Darinnen dessen Alter, und jetziger Einwohner, wahres Herkom[m]en Religion, Sprachen ... nach Historischer Warheit von zweytausend Jahren her erörtert ... werden*, Ed. Kramer, Nürnberg
246. Turner, G., Moica, Gardner, R., H., O'Neill, R., V., (2001), *Landscape Ecology in Theory in Practice. Pattern and Process*, Ed. Springer, P. 109-133
247. Ursu, A., Stoleriu, C., Sfică, L., Roșca, B., (2006), *Adaptarea nomenclaturii CORINE Land Cover la specificul utilizării terenului în România*, *Geographia Technica*, Nr. 1, 2006
248. Vasiliță-Crăciun Ileana-Cristina, (2014), *Modalități de conservare a peisajului cultural storic din Dealurile Ciceului*, *Geographia Napocensis*, Anul VIII, Nr. 1
249. Vasiliță-Crăciun, Ileana-Cristina, (2013), *Peisaje culturale din Dealurile Someșului Mare*, Editura Risoprint, Cluj-Napoca
250. Vasiliță-Crăciun, Ileana-Cristina, (2015), *Planificare peisagistică în scopul conservării patrimoniului cultural. Studiu de caz: Valea Țibleșului*, *Geographia Napocensis* Anul IX, Nr. 1
251. Vecco M., (2010), *A definition of cultural heritage: From the tangible to the intangible*, in *Journal of Cultural Heritage* 11, P. 321–324
252. Vernackt, Elien, (2018), *MAGIS Brugge: Visualizing Marcus Gerards' 16th century Map through its 21st-century Digitization*, in *Art@s Bulletin*, Volume 7, Issue 2, *Cartographic Styles and Discourse*, Article 3
253. Vert, C., (2000), *Geografia populației și așezărilor umane*, Timișoara
254. Vicol, Otilia-Elena, (2013), *Cultural Landscape of the Moldovița Valley-a Predominantly Rural Tourist Resource in Transformation*, *Journal of Tourism*, No. 15, P. 48-55
255. Vidal de la Blache, P., (1908), “*De l'interprétation géographique des paysages*”, *Neuvième Congrès International de Géographie* Compte rendu des travaux du Congrès, Genève. Société générale d'imprimerie (18), 1911, P. 59-64
256. Visan Livia, Abdellaoui, A., Pătru-Stupariu, Ileana, (2012), *Analyse du paysage par traitement des images satellitales: cas du versant oriental des monts Bucegi (Roumanie)*, *Analele Universității „Spiru Haret”*, Seria Geografie, Nr. 15, P.21, Ed. Fundației „România de maine”
257. Vlami, V., Zogaris, S., Djuma, H., Kokkoris, I., P., Kehayias, G., Dimopoulos, P., (2019), *A Field Method for Landscape Conservation Surveying: The Landscape Assessment Protocol (LAP)*, în *Sustainability* 2019, 11
258. Völkers O., (1942), *Dorf und Stadt. Eine deutsche Fibel*, Ed. Stackmann, Leipzig
259. Wagner, E., (1976), *Quellen zur Geschichte der Siebenbürger Sachsen*, Nr. 5, Ed. Böhlau
260. Wagner, E., (1990), *Geschichte der Siebenbürger Sachsen*, Ed. Wort und Welt, Thaur bei Innsbruck
261. Walz, U., Syrbe, R-U., (2013), *Linking landscape structure and biodiversity*, în *Ecological Indicators*, Nr. 31(8)
262. Wascher, D., M., Múgica, Marta, Gulinck, H., (1999), *Establishing Targets to Assess Agricultural Impacts on European Landscapes*, în *Environmental Indicators and Agricultural Policy*, Brouwer, F., Crabtree, B. (ed.), CABI Publishing, Oxon-New York
263. Wilson, M., Lovell, Sarah, (2016), *Agroforestry-The Next Step in Sustainable and Resilient Agriculture*, în *Sustainability*, 8 (6), 574
264. Wilson-Hodges, C., (1978), *Environmental Perception Research. The Measurement of Landscape Aesthetics*, Toronto

265. Wöbse, H., H., (2008), *Bedeutung historischer Kulturlandschaftselemente*, în *Kulturlandschaften: Analyse und Planung*, Küster, H., (ed.), Ed. Peter Lang, Hannover
266. Wolf, T., (1894), *Johannes Honterus der Apostel Ungarns*, Ed. H. Zeidner, Braşov
267. Wollmann, V., (2018), *Das Zunftzeichen der BIRTHÄLMER Seifensieder*, în *BIRTHÄLMER Briefe. Nachrichten aus der alten und neuen Heimat*, Nr. 28, Ed. HOG BIRTHÄLM e.V.
268. XXX, (1843-1872), *Archiv des Vereins für Siebenbürgische Landeskunde*, Ed. Martin von Hochmeister, Hermannstadt
269. XXX, (1844-1846), *Deutsches Volksblatt für Landwirtschaft und Gewerbe in Siebenbürgen*, Sibiu
270. XXX, (1873), *Landesgesetz-Sammlung für das Jahr 1872*, § 83, Ed. Moriz Ráth, Buda-Pest
271. XXX, (1938), *Enciclopedia României*, Asociația Științifică pentru Enciclopedia României, București, Vol. I, Vol. II
272. XXX, (1960-1964), *Istoria României*, Ed. Academiei Române, București
273. XXX, (1963), *Din istoria Transilvaniei*, Ed. Academiei Române, București
274. XXX, (1964), *Fontes ad Historiam Dacoromaniae Pertinentes. Izvoare privind istoria României*, Ed. Academiei Republicii Populare Române, București, 1964, vol. I
275. XXX, (1972), *Convention concernant la protection du patrimoine mondial*, UNESCO
276. XXX, (2003), *Wiesenfibel*, Editura Landschaftspflegeverband "Thüringer Wald" e.V., Friedrichshöhe
277. XXX, (2006), *Landschaftsschutz 2005. Protection du paysage 2005*, Editura Stiftung Landschaftsschutz, Bern
278. XXX, (2008), *Infrastructure and Ecology of Rural Areas. Cultural Landscape. Protecting Historical Cultural Landscapes to Strengthen Regional Identities and Local Economies*, Polish Academy of Science, Kraków
279. XXX, (2008), *Siebenbürgen. Gästehäuser und Wanderwege in der Kirchenburgenlandschaft*, KirchenBurgenSchutzVerein Siebenbürgen-Honterusverlag
280. XXX, (2009), *Management of ancient wood-pasture*, Forestry Commission Scotland
281. XXX, (2012), *Der Holznagel*. Zeitschrift der Interessengemeinschaft Bauernhaus, Nr. 5, IGB, Worpsswede
282. XXX, (2015), *Cronica Cercetărilor arheologice 2015*, Ed. Institutul Național al Patrimoniului
283. XXX, (2017), *Analiza disparităților intraregionale și dezvoltarea urbană la nivelul Regiunii Centru*, ADR Centru, Alba Iulia
284. XXX, 2010, *The Standards & Guidelines for the Conservation of Historic Places in Canada*. Manual. Canada's historic places, P. 49-213. Online: <https://www.historicplaces.ca/en/pages/standards-normes.aspx#:~:text=The%20Standards%20and%20Guidelines%20for,on%20and%20using%20historic%20places>
285. XXX, Academia Română, (2001), *Istoria românilor*, Ed. Enciclopedică, București, vol. I, II, III
286. XXX, Arhiva Muzeului de Istorie "Valea Hârtibaciului", *Schițe monografice*, material dactilografiat, nr. Inv. 10852, Agnita
287. XXX, Ficova SRL, Sighișoara, *Bilanț de mediu pentru Ferma piscicolă Brădeni*, Realizator: Ecoanalitic Dr. Haller, Sibiu
288. XXX, *Siebenbürgen – Gästehäuser und Wanderwege in der Kirchenburgenlandschaft*, Kirchenburgenschutzverein Siebenbürgen, Ed. Honterus
289. Zach, Krista, (2004), *Konfessionelle Pluralität, Stände und Nation: ausgewählte Abhandlungen zur südeuropäischen Religions- und Gesellschaftsgeschichte*, în *Religions- und Kulturgeschichte in Ostmittel- und Südeuropa*, Vol. 6, Ed. LIT
290. Zamminer, E., (1891), *Geschichte des Waldwesens der kon. freien Stadt Kronstadt*, Buchdruckerei von Johann Gott & Sohn Heinrich, Braşov

Site-uri web:

Agnita

1. Vedere aeriana: <http://www.siebenbuerger.de/ortschaften/agnetheln/>
2. Wikipedia: http://de.wikipedia.org/wiki/Agnita#mediaviewer/File:Agnetha_web.jpg
3. Breckner, K., *Unsere Steinburg*, <https://www.siebenbuerger.de/ortschaften/agnetheln/erzaehlung/16131-unsere-steinburg.html>
4. Agnita Muzeul etnografic "Casa cu păpuși": <https://casacupapusi.ro/ro/casa-cu-papusi/>
5. Agnita Muzeul Văii Hârtibaciului: <http://www.hog-agnetheln.com/117-2/nggallery/page/1>

6. Monografia orașului Agnita: <http://www.hog-agnetheln.com/agnetheln/>
7. Agnita Primăria: <http://www.primaria-agnita.ro/>; <https://primaria-agnita.ro/economie/>
8. Fabritius, H., (2017), Agnetheln – ein Ort verändert sein Gesicht, în *Agnethler Blatt*, Nr. 88, An 28/Aprilie 2017; Online: <http://www.hog-agnetheln.com/archiv/>
9. Gazeta Hârtibaciului: <http://gazetahartibaciulu.wixsite.com/online/single-post/2015/03/03/Doi-profesori-pasiona%C5%A3i-de-folclor>; http://gazetahartibaciului.blogspot.com/2013/11/agnita-18-decembrie-1918-un-gest.html?fbclid=IwAR1_BzWBeiCSx9uAh81_hD9IEzgLKqJIY9KNI0wPoPgridtCFUtCVtc66y8;
10. Bârsan, I., (2014), *Concedii neașteptate și nedorite de agnițeni*, în Gazeta Hârtibaciului, Nr. 100, Septembrie 2014: <http://gazetahartibaciului.blogspot.com/2014/10/concedii-neasteptate-si-nedorite-de.html>

Comunitatea sașilor agnițeni:

11. Agnita: <http://www.hog-agnetheln.com/agnetheln/>;
Agnita – biserica și școala: <http://www.hog-agnetheln.com/kirche-und-schule/>
Agnita – cimitirul: <http://www.hog-agnetheln.com/friedhof/>

Imagini și vederi vechi

12. Uwe André: <http://www.u-andree.de/en/transsylvania/agnita-in-historical-images/>
<http://www.u-andree.de/ro/transsylvania/agnita-in-imagini-istorice/>
<http://www.u-andree.de/transsylvania/agnetheln-in-bildern/>
Agnita: „*Agnethler Blatt*“, Nr. 87, 27. Jahrg. / Dec. 2016, P. 3-6 at <http://www.hog-agnetheln.com/archiv/>

Asociații și fundații:

13. Asociația Crescătorilor de Albine Sibiu: <http://www.aca.org.ro/>
14. Asociația GAL Microregiunea Hârtibaciu: <http://www.gal-mh.eu/harta/index.php/news>
15. Asociația Hosman Durabil: <https://www.moara-veche.ro/>
16. Asociația Sașilor Transilvăneni (Verband der Siebenbürger Sachsen): <http://www.siebenbuerger.de/>
<http://www.siebenbuerger.de/ortschaften/rothberg/>
17. MET: <https://www.mihaieminescutrust.ro>
18. Fundația Adept: <https://fundatia-adept.org/ro/satele-sasesti-din-s-e-transilvaniei/>
19. Asociația Monumentum Alțâna: <http://asociatiamonumentum.ro/cms/restaurarea-fatadelor/> ;
<http://asociatiamonumentum.ro/cms/construirea-tiglariei-traditionale-din-apos2/>
20. Asociația Eliaș: <https://elijah.ro/>
21. Ordinul Arhitecților din România: <https://www.oar.archi/>

CIMEC:

22. XXX, (2015), *Cronica Cercetărilor arheologice 2015*, Ed. Institutul Național al Patrimoniului, P. 53, Online : <http://www.cimec.ro/Arheologie/cronicaCA2009/rapoarte/014.html>
<http://map.cimec.ro/Mapserver/index.html>
<http://ran.cimec.ro/sel.asp?nr=1&nrante=1&lpagante=20&lpag=100&Lang=RO&layers=&crsl=2&csl=2&clst=1&jud=35&campsel=jud> ; <http://ran.cimec.ro/sel.asp>
23. Ghidul muzeelor: <http://ghidulmuzeelor.cimec.ro/id.asp?k=739> ;
<http://ghidulmuzeelor.cimec.ro/id.asp?k=542> ; <http://ghidulmuzeelor.cimec.ro/id.asp?k=739>

Costume populare din România:

24. Colecții etnografice din Transilvania: <http://traditionen.evangel.ro/fe/tradition/view/22>
25. <http://www.eliznik.org.uk/RomaniaPortul/>
<http://www.nmi.hu/Hirek/Hungarikum-Napok-Nagyszebenben>
<http://www.romanianlabel.ro/blog/tipuri-de-ie-traditionala/>
<http://www.romanianmuseum.com/ROMANESTE/RomaniaFolk.html>

Autorități, ministere, programe, strategii:

26. Consiliul Județean Sibiu: <http://www.cjsibiu.ro/arhitectura/>
27. Agenda 21: <https://sustainabledevelopment.un.org/content/documents/Agenda21.pdf>
28. Council of Europe Framework Convention on the Value of Cultural Heritage for Society: https://www.coe.int/en/web/conventions/full-list/-/conventions/treaty/199/signatures?p_auth=dg2WfyCT
29. Council of Europe, European Landscape Convention: <http://www.coe.int/en/web/conventions/full-list/-/conventions/treaty/176> , <https://rm.coe.int/CoERMPublicCommonSearchServices/DisplayDCTMContent?documentId=0900001680080621>
30. Dezvoltare rurală durabilă prin revitalizarea meșteșugurilor: Strategie de dezvoltare a inițiativelor regionale și locale privind meșteșugurile în Regiunea Centru, P. 59-65 (<http://mestesuguri-rurale.ro/index.php/documente/item/234-strategii-regionale-de-dezvoltare-a-initiativelor-locale-si-regionale-in-domeniul-mestesugurilor>)
31. European Landscape Convention: http://www.coe.int/t/dg4/cultureheritage/heritage/Landscape/default_en.asp <https://www.coe.int/en/web/conventions/full-list/-/conventions/treaty/176>
32. United Nations Knowledge Platform: <https://sustainabledevelopment.un.org/sdgsproposal>
33. European Soil Data Center: http://esdac.jrc.ec.europa.eu/resource-type/national-soil-maps-eudasm?field_data_continent_tid_selective=All&field_data_country_country_selective=RO&field_data_country_coverage_value=
34. ECOVAST: https://www.ecovast.org/english/about_e.html
35. Agencia Națională de Cadastru și Publicitate Imobiliară-ortofoto: <http://www.ancpi.ro>
36. <https://www.stiriagricole.ro/subventii-de-269-euroha-pentru-conservarea-acvilei-tipatoare-51054.html>
37. Ministerul Agriculturii și Dezvoltării Rurale: <https://madr.ro/masuri-de-mediu-si-clima.html>
38. Agencia Națională pentru Protecția Mediului: <http://www.anpm.ro/>
39. Programul Național de Dezvoltare Rurală: <https://www.pndr.ro/masuri-de-mediu-si-clima/masuri-de-mediu-si-clima-2019.html>
40. Strategia de dezvoltare teritorială a României: http://www.cciabr.ro/agricultura/SDTR_proiect.pdf
41. U.S. Department of the Interior, National Park Service: Understand Cultural Landscapes, <https://www.nps.gov/subjects/culturallandscapes/understand-cl.htm>
42. Natura 2000: <http://natura2000.eea.europa.eu/Natura2000/SDF.aspx?site=ROSPA0099#7>, <https://www.natura2000transilvania.ro/despre-zona/biodiversitate>
43. Natura 2000: <http://natura2000transilvania.ro/library/upload/documents/2013-01-10-14-19-41-4c258.pdf>
44. One Geology Portal: <http://portal.onegeology.org/OnegeologyGlobal/>
45. Secretariatul de stat pentru culte: http://culte.gov.ro/?page_id=57
46. Bird Life IBA - Arii de importanță avifaunistică: <http://iba.sor.ro/transilvania.htm>
47. Camera deputaților: http://www.cdep.ro/pls/legis/legis_pck.htp_act_text?id=37056

UNESCO:

48. <https://whc.unesco.org/en/culturallandscape/#1>, <https://whc.unesco.org/document/163852> (2019), *Operational Guidelines for the Implementation of the World Heritage Convention*, UNESCO World Heritage Centre, P. 25-29, Online: <https://whc.unesco.org/document/178167>

Dicționare, enciclopedii:

49. Dictionnaire de la langue française: <https://www.littre.org/definition/pays>
50. Dicționarului Explicativ al Limbii Române : <http://dexonline.ro>
51. Kretschmer, Ingrid, Lexikon der Kartographie und Geomatik: Österreichische Kartographie, Online: <https://www.spektrum.de/lexikon/kartographie-geomatik/oesterreichische-kartographie/3794>
52. Enciclopedia României: http://enciclopediaromaniei.ro/wiki/Memorandumul_din_1892#Con.C5.A3inutul_memorandumul_Conda_mnarea_dualismului

Istoric:

55. Scurta istorie a locuirii Transilvaniei: <http://mek.oszk.hu/02100/02113/html/56.html>
56. Strabon, despre daci: http://www.enciclopedia-dacica.ro/?operatie=subiect&locatie=izvoare_traduse&fisier=Strabon_-_Geographia-7
57. Ion Gavrilă Ogoranu: <http://ogoranu.ro/2015/10/14/ultimul-supravietuitor-al-centrului-de-rezistenta-anticomunista-din-codrul-fetea-a-plecat-la-fratii-sai-din-ceruri/>
58. Tipărituri românești vechi: <https://tiparituriromanesti.wordpress.com/2012/06/07/supplex-libellus-valachorum-transsilvaniae-cluj-1791/>
59. *Catastihul Țării Ardealului de pre județe și vamele și ocnele*, <https://tiparituriromanesti.wordpress.com/2013/04/21/catastihul-tarii-ardealului-1599/>

Harți și informații turistice, evenimente:

60. Podișul Hârtibaciului: Oameni- Locuri- Fapte
61. Săptămâna "Sibiu 100%": <https://sibiu100.ro/sibiu-100/1421-agnita-criza-merge-mai-departe/>
62. Documentarul lui Daniel Roxin despre „piramidele” cu comori: https://www.youtube.com/watch?time_continue=204&v=MtXzq5uBFas
63. Forum online al Transilvaniei: <http://www.sibiweb.de>
64. <https://cabadan.wordpress.com/2011/06/08/concurs-de-pescuit-la-bradeni-si-caratare-in-cheile-tureni/>
65. Stejarul de la Mercheașa: <http://www.carpattera.org/ro/stejarul-secular-de-la-mercheasa--batranul-carpasilor>
66. Centrul pentru Tineret Bărcut: <http://www.kinderspielstadt.ro/ro/barcut/>
67. <http://www.romaniatourism.com/maps.html>
68. <http://www.dailytraveller.ro/valea-hartibaciului-bucket-list/>
69. <http://www.sibiu-turism.ro/Ce-facem-Evenimente-Targuri-si-festivaluri-Transilvanian-Brunch1.aspx>
70. <http://www.sibiu-turism.ro/Ce-vizitam-Cultura-si-patrimoniul-Gastronomie-Targuri-si-piete.aspx>
71. <http://www.sibiu-turism.ro/Ce-vizitam-Cultura-si-patrimoniul-Patrimoniul-religios-Biserici-ortodoxe.aspx>
72. <http://www.tribuna.ro/stiri/actualitate/organizare-82575.html>
73. Drumul naturii pe Valea Hârtibaciului: <http://www.sibiu-turism.ro/Ce-vedem-Circuite-recomandate-Drumul-naturii1.aspx>
74. Săptămâna Haferland: <http://www.haferland.ro/saptamana-haferland/>

Companii:

75. Vicla: <http://viclaimpex.ro/>
76. Firma Benzi adezive: <http://www.benzi-adezive.ro/>
77. <https://www.harting.com/RO/en-gb>
78. Firma SIFEE New Energy SRL: <https://sifeenewenergy.eu/services/proiecte-fotovoltaice/>
79. S.C. „Apa Târnavei Mari” S.A.: <http://proiect.apatarnavei.ro/primele-statii-de-epurare-pentru-regiunile-agnita-si-dumbraveni/>
80. Karpaten Meat: <http://karpaten-meat.com/> ; <http://karpaten-meat.com/en/fattening/fattening-farm/>
81. <http://www.cjsibiu.ro/valea-hartibaciului/parcul-industrial-agnita/>

Gaz:

82. <http://www.anre.ro/ro/gaze-naturale/informatii-de-interes-public/furnizori-gaze-naturale>
83. Gas Infrastructure Europe: <https://agsi.gie.eu/#/historical/RO>
84. S.C. Transgaz: <http://www.transgaz.ro/ro/despre-noi/prezentare-comanie/istoric-si-personalitati>: <http://www.transgaz.ro/index.php/ro/activitati/cooperare-internationala>
85. <https://www.romgaz.ro/ro/content/productie-gaze-naturale>

Biserici:

86. Lăcașe de cult : <http://lacasedecult.cimec.ro/RO/Documente/asp/culte.asp?nr=151>
Secretariatul de Stat pentru Culte din Guvernul României: http://culte.gov.ro/?page_id=57
<https://www.crestinortodox.ro/manastiri/manastirea-nocrich-hartibaci-117785.html>

<http://www.mitropolia-ardealului.ro/praznicul-nasterii-maicii-domnului-la-asezământul-monahal-din-nocrich-judetul-sibiu/>
http://www.encyclopedia-dacica.ro/?option=com_content&view=article&id=782&Itemid=462
<https://www.crestinortodox.ro/datini-obiceiuri-superstitii/traditii-obiceiuri-moarte-96915.html><https://ziarullumina.ro/actualitate-religioasa/stiri/biserica-noua-la-schitul-pelisor-7487.html>
<http://www.mitropolia-ardealului.ro/praznicul-nasterii-maicii-domnului-la-asezământul-monahal-din-nocrich-judetul-sibiu/>
<https://www.biserici.org/index.php?menu=BI&code=10148>
<https://www.crestinortodox.ro/rugaciuni/cele-10-porunci-dumnezeiesti-72538.html>
<https://www.crestinortodox.ro/sfinti/sfantul-apostol-andrei/sfantul-andrei-72879.html>
Biserica Evanghelică din România: <http://www.evangel.ro/>
Biserici fortificate : <https://kirchenburgen.org/ro/biserici-fortificate/>
<http://biserici.org/index.php?menu=BISB>
<https://www.biserici.org/index.php?menu=BI&code=12247>
Baza de date cu orgi a Bisericii Evanghelice: <http://orgeldatei.evangel.ro/organ/list>
Imagini ale bisericilor fortificate din Transilvania: <http://photoraid.dordeduca.ro/>
<https://basilica.ro/cel-mai-vechi-lacas-ortodox-din-oras-tezaurul-bisericii-sfantul-nicolae-din-agnita/>

Frații Grecu:

87. <http://www.chirpar.ro/chirpar/sasaus/>
88. <http://www.formula-as.ro/2009/862/spiritualitate-39/zugravii-lui-dumnezeu-10926-print>
89. *Pe urmele picturilor Grecu din Săsăuș, pe calea Sighiului: Săsăuș–Ilimbav–Fofeldea*, Obștea Săsăuș, Casa de Presă și Editură Sibiu, 2015, Sibiu

Învățămint:

90. Dieter Drotleff, (2009), Das Schulwesen der Siebenbürger Sachsen einzigartig dargestellt, în *Karpatenrundschaу*, 12.11.09 : <http://forumkronstadt.ro/karpatenrundschaу-artikel/artikel/das-schulwesen-der-siebenbuerger-sachsen-einzigartig-dargestellt/>
91. Hellmann, E., (2017), *Die Dorfschulen in Siebenbürgen im 14. - 16. Jh.*, în *ADZ (Allgemeine Deutsche Zeitung für Rumänien)*, Duminică, 29.12.2019, Online: <https://adz.ro/karpatenrundschaу/artikel-karpatenrundschaу/artikel/die-dorfschulen-in-siebenbuergen-im-14-16-jh>
92. Marinescu, Andra, (2015), *Școala din Țichindeal a sărbătorit 235 de ani de existență*, în *Tribuna*, 15.10.2015, Online :<http://www.tribuna.ro/stiri/eveniment/scoala-din-tichindeal-a-sarbatorit-235-de-ani-de-existenta-110667.html>
93. Mihuleț, A., (2015), *Povestea școlii românești din Țichindeal - cea mai veche școală românească de pe Valea Hârtibaciului – 1780*, Online: http://leschkirch.de/?page_id=1802
94. <http://www.hog-agnetheln.com/kirche-und-schule/>

Păduri și vânat:

95. <http://www.dssibiu.ro/ocoale-silvice/os-agnita>
<http://www.mmediu.ro/beta/wp-content/uploads/2012/11/2012-11-DGP-tarife.pdf>
96. <http://www.padurilefagarasului.ro/>
97. http://www.rosilva.ro/unitati_silvice/sibiu_1_32.htm
98. <http://www.sibiul.ro/orase-din-sibiu/agnita.html>
99. Direcția Silvică Sibiu: www.dssibiu.ro/ocoale-silvice/
100. <https://www.magazindearme.ro/vanatoare-mistreti-cota-2016-2017/>
101. Codul Silvic Maghiar: Magyar joganyagok - 1879. évi XXXI. törvénycikk – Erdőtörvény:
<https://net.jogtar.hu/getpdf?docid=87900031.TV&targetdate=&printTitle=1879.+%C3%A9vi+XXXI.+t%C3%B6rv%C3%A9nycikk&referer=1000ev>
102. Codul Silvic Românesc din 1910 cu modificările ulterioare din 1920 și 1923:
<http://legislatie.just.ro/Public/DetaliiDocument/19328>
103. <https://ocoalederegim.ro/membri.html>

Mocănița:

104. Istoria mocăniței: <http://www.spurfilm.eu/agnita/history.html>
105. <http://www.mocanita.ro/mh/istoric-mocanita-vh/>
106. Asociația “Prietenii Mocăniței”: <https://sibiuaagnitarailway.com/friends/index.php>
107. Traseul cicloturistic ”Mocănița–Valea Hârtibaciului”: <http://www.turainnatura.ro/ro/traseul-cicloturistic-mocanita-valea-hartibaciului>
108. <https://www.oradesibiu.ro/stiri-sibiu-ultima-ora/mocanita-suiera-din-nou-pe-valea-hartibaciului-se-fac-rezervari-deja/>
109. Mocănița din Valea Hârtibaciului:
http://ro.wikipedia.org/wiki/Calea_ferat%C4%83_%C3%AEngust%C4%83_Sibiu%E2%80%93Agnita%28%E2%80%93Sighi%C8%99oara%29
110. Mocănița din Valea Hârtibaciului: <http://www.u-andree.de/transsylvania/die-wusch/>
111. Mocănițe din România: <http://www.beyondtheforest.com/Romania/CFR4.html>

Minorități:

112. <http://www.hog-agnetheln.com/trachten-2/nggallery/page/1>
113. <http://www.tribuna.ro/stiri/special/cimitirul-evreiesc-de-pe-str-macaralei-o-poveste-izolata-si-uitata-94100.html>
114. <https://stiri-sibiu-ultima-ora.oradesibiu.ro/tiganii-din-sibiu-vor-sa-intre-in-carte-recordurilor-cu-prepararea-celui-mai-mare-sahaimas-din-lume/>
115. <https://alzen-hog.de/galerie/nggallery/galerie/14-alzner-treffen>
116. http://adevarul.ro/locale/sibiu/de-ziua-lor-romii-protestat-discriminarii-1_50acf9087c42d5a6638ce335/index.html
117. Evrei Alțâna:
<https://jbat.lbi.org/items/show/1729?fbclid=IwAR2ya2HPtI4cLFgQzXxiBISrvnuqSfk1S4VK-0R5Emcmm2KnYQ4svPgVI68>

Mestesuguri:

118. https://adevarul.ro/locale/sibiu/ana-preda-ultima-tesatoare-altana-7_555ecbebcf376e35769230/2_555ecc39cfbe376e357693b5.html
119. <https://www.fair-craft.com/handwerker/stella-und-nicolaie-subtirel/>

Localități:

120. Informații topografice ale localităților din Transilvania:
http://www.genealogy.net/reg/ESE/7burg_hj.html#hundertbucheln
121. Siebenbuerger.de:
<https://www.siebenbuerger.de/ortschaften/agnetheln/luftbilder/12393.html>
<https://www.siebenbuerger.de/ortschaften/hennedorf/bilder/14984.html>
122. <https://www.siebenbuerger.de/ortschaften/holzmengen/luftbilder/12831.html>
123. Roșia <http://www.siebenbuerger.de/ortschaften/rothberg/>
124. <https://kirchenburgen.org/location/hennedorf-bradeni/>, <https://www.hoghenndorf.de/fotos/kirche/kirche-von-innen/>
125. <https://povestisasesti.com/2013/09/03/a-fost-odata-sau-niciodata-satul-androchel/>
126. Georg-Eckert-Institut für internationale Schulbuchforschung, Georg-Eckert-Institut für internationale Schulbuchforschung, 2012: <https://www.deutsche-digitale-bibliothek.de/item/4HB45BDOAODHCRAUBSDMPQLLGV4LQ54A>, <http://gei-digital.gei.de/viewer/resolver?urn=urn:nbn:de:0220-gd-6043581>
127. Gospodărie Franken: Georg-Eckert-Institut für internationale Schulbuchforschung, 2012:
<https://www.deutsche-digitale-bibliothek.de/item/4HB45BDOAODHCRAUBSDMPQLLGV4LQ54A>
Accesat on 22.10.2019
128. Gospodării: <https://fundatia-adept.org/ro/satele-sasesti-din-s-e-transilvaniei/>
<https://www.siebenbuerger.de/ortschaften/mergeln/bilder/37073.html>

- <https://www.siebenbuerger.de/zeitung/artikel/kultur/8316-das-geheimnis-der-henndorfer-truhen.html>
129. Dealu Frumos: <http://arhitectura-1906.ro/2019/02/centrul-de-studii-de-arhitectura-vernaculara-dealu-frumos-o-lectie-vie-de-patrimoniu/>
<http://ran.cimec.ro/sel.asp?lpag=100&Lang=RO&layers=&crsl=2&cscel=2&clst=1&jud=35&campsel=jud&nr=1>
Vurpâr: <https://www.vurpar.ro/despre-vurpar/cultura-si-traditii/>
130. Ritz, J., M., (1955), *Dorf*, în *Reallexikon zur Deutschen Kunstgeschichte*, vol. IV, P. 224–245, Online: RDK Labor: <http://www.rdklabor.de/w/?oldid=93028>

Muzee, obiective:

131. <https://zigzagprinromania.com/blog/muzeul-casa-cu-papusi-din-agnita/>
132. Institutul Național al Patrimoniului: <https://patrimoniu.gov.ro/> ; <https://patrimoniu.ro/>
<https://patrimoniu.ro/monumente-istorice/egispat>
<http://egispat.inp.org.ro/Romania.aspx>

Geologie, pEdologie:

133. Institutul Geologic al României: <http://www.igr.ro/index.php?optiune=51> Accesat în 15.05.2017
134. Sistemul de clasificare al solurilor: <http://www.chimiamediuului.ro/2009/10/12/clasificarea-solurilor/>
Accesat în 17.02.2018

Imagini satelitare:

135. <http://glcf.umd.edu/>
136. <http://glovis.usgs.gov/>

Legi:

137. Constituția din 13 aprilie 1948: Art. 6. - http://www.cdep.ro/pls/legis/legis_pck.htm?act_text?id=1574
138. LEGE nr. 2 din 15 aprilie 1976 privind adoptarea "Programului național pentru conservarea și dezvoltarea fondului forestier în perioada 1976-2010" <http://legislatie.just.ro/Public/DetaliiDocument/21356>
LEGE nr.1 din 11 ianuarie 2000 pentru reconstituirea dreptului de proprietate asupra terenurilor agricole și celor forestiere, solicitate potrivit prevederilor Legii fondului funciar nr.18/1991 și ale Legii nr.169/1997 : http://www.cdep.ro/pls/legis/legis_pck.htm?act_text?id=21873
Legea fondului funciar nr. 18/1991: http://www.cdep.ro/pls/legis/legis_pck.htm?act_text?id=1622
Legea Fondului Funciar: <http://legislatie.just.ro/Public/DetaliiDocument/1459>,
http://www.cdep.ro/pls/legis/legis_pck.htm?act_text?id=1622
<http://legislatie.just.ro/Public/DetaliiDocument/73843>
<https://lege5.ro/Gratuit/gm4teojzga/legea-nr-489-2006-privind-libertatea-religioasa-si-regimul-general-al-cultelor>
Ordonanța de urgență a Guvernului nr. 57/2007 privind regimul ariilor naturale protejate, conservarea habitatelor naturale, a florei și faunei sălbatice, aprobată cu modificări și completări prin Legea nr. 49/2011: http://www.cdep.ro/pls/legis/legis_pck.htm?act_text?id=72985
<https://lege5.ro/Gratuit/geytonztha/lista-comunelor-cu-punctajul-acordat-in-functie-de-potentialul-turistic-ordin-567-2008?dp=gm4domrugm2tq>
ORDIN nr. 2314 din 8 iulie 2004: http://www.cdep.ro/pls/legis/legis_pck.htm?act_text?id=50783
<https://lege5.ro/Gratuit/gyydinby/conventia-privind-protectia-patrimoniului-mondial-cultural-si-natural-din-23111972->
139. http://www.mie.ro/documente/dezvoltare_teritoriala/amenajarea_teritoriului/patn_elaborate/secVI/metodologie.pdf
140. Lista monumentelor istorice: <http://www.cultura.ro/lista-monumentelor-istorice>
141. Lista comunelor cu punctajul acordat pentru potențialul turistic: https://portal.afir.info/informatii_generale_pndr_pndr_2007_2013_masura_313_incurajarea_activitatilor_turistice

Lole:

142. Fuga lolelor Agnita

<http://www.breaslalolelor.ro/> <https://www.gazetadeagricultura.info/dezvoltare-rurala/obiceiuri-si-traditii/19605-obiceiul-lolelor-din-agnita-fuga-lolelor-2017.html>
<https://www.romaniaturistica.ro/obiceiul-lolelor-din-agnita>

Atlase, atlase peisaje culturale internaționale :

143. Atlas teritorial al României: http://www.mdrl.ro/documente/atlas/a_div_adm.htm

144. Atlas-Agenția Națională pentru Protecția Mediului: <http://atlas.anpm.ro/atlas>

145. Atlasul peisajelor este disponibil pe site-ul Ministeriului Mediului din Republica Cehă:
https://www.mzp.cz/cz/atlas_krajiny_cr

146. Atlasul peisajelor din Republica Cehă: https://www.mzp.cz/cz/atlas_krajiny_cr

147. Atlasul peisajelor din Republica Cehă-recenzii: <http://www.geo-spatial.org/recenzii/atlasul-peisajelor-din-republica-ceha-2009>

148. Portal ESRI: <https://www.esri.com/about/newsroom/arcuser/no-ordinary-atlas/>

149. Online magazin Univerzity Karlovy: <https://iforum.cuni.cz/IFORUM-10235.html>

150. <https://www.kleks.app/>

[https://mapview.region-](https://mapview.region-frankfurt.de/maps/resources/apps/Kulturlandschaftskataster/index.html?app=Kulturlandschaftskataster&lang=en)

[frankfurt.de/maps/resources/apps/Kulturlandschaftskataster/index.html?app=Kulturlandschaftskataster&lang=en](https://mapview.region-frankfurt.de/maps/resources/apps/Kulturlandschaftskataster/index.html?app=Kulturlandschaftskataster&lang=en)

<https://projekt-hist-kulturlandschaft.jimdofree.com/>

<https://www.kuladig.de/Karte>

<https://atlas.landscapefor.eu>

https://annoeuropeo2018.beniculturali.it/wp-content/uploads/2018/04/Atlante-patrimonio_presentazione-progetto.pdf

Ministerio para la Transición Ecológica y el Reto Demográfico:

<https://www.miteco.gob.es/es/biodiversidad/servicios/banco-datos-naturaleza/informacion-disponible/Paisajes.aspx>,

<https://www.mapama.gob.es/ide/metadatos/index.html?srv=metadata.show&uuid=a01cb8d6-2a8c-4041-bd92-5b8f0db67a66>

<http://www.100paisajes.es/map>

<http://www.culturaydeporte.gob.es/planes-nacionales/planes-nacionales/paisaje-cultural/actuaciones/cien-paisajes-culturales.html>

Instituto Andaluz del Patrimonio Histórico: <https://guiadigital.iaph.es/inicio>

http://kulturlandschaften.eu/images/sampled/PDF/Heimat_erkennen_Erfassungshandbuch_April14_klein4.pdf

<http://www.geopunt.be/kaart>

<https://www.onroerenderfgoed.be/over-ons>

Geoportaal Vlaanderen :

<https://geo.onroerenderfgoed.be/#zoom=11&lat=6660340.4596288325&lon=358566.0996857618>

<http://geoloket.provincieantwerpen.be/geoloketten/?viewer=extern&LayerTheme=5>

<https://www.landschapnederland.nl/provinciale-cultuurhistorische-waardenkaarten> ,

<https://fryslan.maps.arcgis.com/apps/webappviewer/index.html?id=9c1cabee3b9241d4a9eca71de51bb079>

<https://www.landschapnederland.nl/kaart-groen-erfgoed>

<https://www.landschapnederland.nl/agrarische-landschappenkaart>

<https://www.landschapnederland.nl/verstedelijingskaart>

Flevoland Heritage - Cultural heritage and art in Flevoland:

http://www.flevolanderfgoed.nl/home/zoek_op_de_kaart.html

<https://www.aramis.admin.ch/Texte/?projectid=28877&Sprache=de-CH>

XXX, *Stiftung Landschaftsschutz Schweiz*, 2014 „Charakteristische Kulturlandschaften der Schweiz“, Berna, Online:

<https://www.sl-fp.ch/de/stiftung-landschaftsschutz-schweiz/dokumentation/katalog-charakteristische-kulturlandschaften-53.html>

<https://map.geo.admin.ch/>

Metrici și software:

151. FISGRW, (1998), *Stream Corridor Restoration: Principles, Processes and Practices*, The Federal Interagency Stream Restoration Working Group, P. 52, online: https://www.nrcs.usda.gov/Internet/FSE_DOCUMENTS/stelprdb1044574.pdf
- McGarigal, K., Marks, Barbara, J., (1994), FRAGSTATS: Spatial Pattern Analysis Program for Quantifying Landscape Structure, Online: <https://www.umass.edu/landeco/pubs/mcgarigal.marks.1995.pdf> ,
<http://www.umass.edu/landeco/research/fragstats/fragstats.html>
<https://www.umass.edu/landeco/research/fragstats/fragstats.html>, McGarigal, K., Marks Barbara, (1995), FRAGSTATS: Spatial Pattern Analysis Program for Quantifying Landscape Structure, General Technical Report, U.S. Department of Agriculture, Forest Service, Pacific Northwest Research Station, Online: <https://www.fs.usda.gov/treeearch/pubs/3064>
<https://www.arcgis.com/home/item.html?id=36f9728a895e4f5386bdec68be6d08ac>
<https://clarklabs.org/terrset/#terrset-system-requirements>
<http://intarch.ac.uk/leap/>
<https://sites.google.com/site/largvlate/gis-tools/imt>
<https://r-spatialecology.github.io/landscapemetrics/>
152. Amenajare peisajistă: <https://www.landsdesign.com/>
153. Imagini satelitare multispectrale:
<https://eos.com/landviewer/>
<https://scihub.copernicus.eu/>
<http://apps.sentinel-hub.com/eo-browser/>
<https://search.earthdata.nasa.gov/>
<https://search.remotepixel.ca/>
<https://earthexplorer.usgs.gov/>
154. Earth Observing System: <https://eos.com/blog/band-combinations-for-landsat-8/>
155. Combinații benzi spectrale: <https://www.esri.com/arcgis-blog/products/product/imagery/band-combinations-for-landsat-8/>
156. LANMAP2: <https://www.wur.nl/en/show/The-European-landscape-map.html>
157. McGarigal, K., Cushman, S., Ene, E., (2012), FRAGSTATS v4: *Spatial Pattern Analysis Program for Categorical and Continuous Maps*. Computer software program produced by the authors at the University of Massachusetts, Amherst (<http://www.umass.edu/landeco/research/fragstats/fragstats.html>)

Surse ale bazelor de date preluate pentru prelucrarea cartografică:

158. Date vectoriale, limite uat-uri, județe, țară: <http://www.geo-spatial.org/download/romania-seturi-vectoriale>
159. Date vectoriale Corine Land Cover 2000: <http://www.geo-spatial.org/download/datele-corine-landcover-reproiectate-in-stereo70>
160. Bossard, M., Feranec, J., Othahel, J., (2000), *CORINE land cover technical guide– Addendum 2000*, Technical Report, EEA, Copenhagen, Online:
https://www.eea.europa.eu/publications/tech40addhttps://land.copernicus.eu/user-corner/technical-library/corine-land-cover-nomenclature-guidelines/docs/pdf/CLC2018_Nomenclature_illustrated_guide_20190510.pdf
161. <https://land.copernicus.eu/pan-european/corine-land-cover> <https://www.eea.europa.eu/publications/COR0-landcover>
162. Honterus Chorographia Transilvaniae:
<https://ro.m.wikipedia.org/wiki/Fi%C8%99ier:Transylvania1532Map.jpg>
163. Harta geologică 1:200000: <http://www.geo-spatial.org/download/harta-geologica-a-romaniei-scara-1-200-000>
164. Model digital de elevație pentru Europa: <http://www.eea.europa.eu/data-and-maps/data/eu-dem#tab-gis-data>
165. Planurile directe de tragere în sistem de proiecție Lambert-Cholesky (1916-1959): <http://www.geo-spatial.org/harti/download-planuri-tragere.php?lang=en>
166. Hărțile sovietice 1:50000 reproiectate în Stereo70: <http://www.geo-spatial.org/download/hartile-sovietice-50k>

167. Hărțile topografice realizate de DTM (Direcția Topografică Militară) - ediție nesecretă 1996-1998; sistem de coordonate UTM/WGS84; <https://portal.geomil.ro/arcgis/home/webmap/viewer.html?webmap=cce134f4a9694d9faa353983fbc15635>
168. Limitele SCI, SPA, Sit Natura 2000: <http://www.mmediu.ro/articol/date-gis/434>
169. Date vectoriale Corine Land Cover 2000: <http://www.geo-spatial.org/download/datele-corine-landcover-reproiectate-in-stereo70>
170. Datele Corine Land Cover 1990, 2000, 2006, 2012: <http://land.copernicus.eu/pan-european/corine-land-cover/view>
2012: <http://land.copernicus.eu/pan-european/corine-land-cover/clc-2012?fieldsetlegend-download=True-selected-@corine-land-cover@corine-land-cover-1@corine-land-cover-2@corine-land-cover-3>)
<https://land.copernicus.eu/pan-european/corine-land-cover/clc2018>
171. Harta geologică 1:200000: <http://www.geo-spatial.org/download/harta-geologica-a-romaniei-scara-1-200-000>
172. Hărțile militare habsburgice – Mapire.eu:
<http://mapire.eu/en/map/firstsurvey/?bbox=2644568.304610528%2C5721235.1301171575%2C2853394.2658856297%2C5807914.720192548;>
<https://mapire.eu/en/map/secondsurvey-transylvania/?layers=54&bbox=2719013.910838073%2C5766957.531561036%2C2731903.1047326606%2C5770779.382975295>
<https://mapire.eu/de/map/firstsurvey-transylvania/?layers=142&bbox=2615780.208832648%2C5902734.268100226%2C2640813.335596043%2C5909422.5080751795>
<http://mapire.eu/en/map/firstsurvey/?layers=osm%2C1%2C73&bbox=2736235.9203826915%2C5774522.1580331465%2C2749134.668905815%2C5779395.018586327>
<http://mapire.eu/en/map/secondsurvey/?layers=osm%2C5%2C42&bbox=2718139.735052908%2C5766565.334314658%2C2731038.4835760314%2C5771438.194867839>
http://mapire.eu/de/map/hkf_25e/?layers=osm%2C11&bbox=2715822.7917701537%2C5752756.108927708%2C2728721.5402932772%2C5757628.969480889
<https://mapire.eu/en/map/firstsurvey-transylvania/?layers=142&bbox=2719507.360554071%2C5777187.165259512%2C2731383.763823881%2C5781009.016673772>
<https://mapire.eu/en/map/firstsurvey-transylvania/?layers=142&bbox=2735567.768019646%2C5774951.503794784%2C2748179.8776867003%2C5778773.355209043>
<https://mapire.eu/en/map/firstsurvey-transylvania/?layers=142&bbox=2736897.4098851397%2C5775214.141098005%2C2746585.8032202856%2C5778080.5296586985>
<https://mapire.eu/en/map/thirdsurvey25000/?layers=129&bbox=2735986.1757548703%2C5774853.513542675%2C2747700.1503395736%2C5778197.633530152>
<https://mapire.eu/en/map/europe-19century-secondsurvey/?bbox=2739665.5222217073%2C5775429.938652423%2C2744509.7188892807%2C5776863.13293277&layers=158%2C164>
173. Imagini satelitare: <http://glovis.usgs.gov/>
174. Imagini satelitare: <http://glcf.umd.edu/>
175. Hărți ale României: <http://www.vidiani.com/maps-of-romania/>
176. Hărți vechi: <https://www.raremaps.com/gallery/browse/category/Europe/Romania>